

Rubbish and recycling calendar 2024-25

Your bin day is: **Tuesday - Rural**

	 Recycling	 Rubbish & Garden Waste	 Recycling	 Rubbish & Garden Waste	 Recycling	 Rubbish & Garden Waste
October 2024		Tues 1st	Tues 8th	Tues 15th	Tues 22nd	Tues 29th
November 2024	Tues 5th	Tues 12th	Tues 19th	Tues 26th		
December 2024	Tues 3rd	Tues 10th	Tues 17th	Tues 24th Black Bin Only	Tues 31st No Collection	
January 2025	Tues 7th	Tues 14th	Tues 21st	Tues 28th		
February 2025	Tues 4th	Tues 11th	Tues 18th	Tues 25th		
March 2025	Tues 4th	Tues 11th	Tues 18th	Tues 25th		

Important Christmas, New Year and Winter Service Break Information



Your red bin will **not** be collected on Tuesday 31st December. Your collections will restart after New Year when we will collect your red bin on Tuesday 7th January and your black bin and up to three bags of side waste on Tuesday 14th January.

Your green bin(s) will **not** be collected on Tuesday 24th December. Please continue to put your black bin out as this will be collected as normal.

Please note the Garden Waste service (green bin) is an opt-in paid for service. For more information visit www.northwarks.gov.uk/green



Your recycling guide

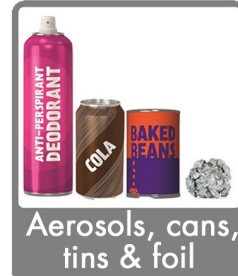
Use your red-lidded bin to recycle:



Glass bottles & jars



Plastic bottles, pots, tubs & trays



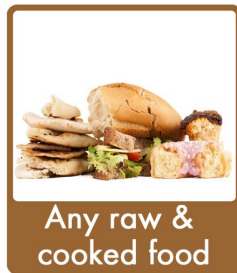
Aerosols, cans, tins & foil



Paper, card & cardboard

Put items loose in your recycling bin. No bags please.

Use your green bin for garden & food waste:



Any raw & cooked food



Tea bags & Coffee Grounds



Grass cuttings



Leaves, twigs & small branches

This is an opt in service. You can choose to have your green bin collected for an annual fee. Find out more and sign up at www.northwarks.gov.uk/green

Use your black bin for rubbish:



Non-recyclable household waste including:



Plastic packets, wrappers & film



Polystyrene



Pouches & tetrapak cartons



Rigid plastic (e.g. broken toys)