



Rubbish and recycling calendar 2024-25

Your bin day is: **Monday - Rural**

	 Recycling	 Rubbish & Garden Waste	 Recycling	 Rubbish & Garden Waste	 Recycling	 Rubbish & Garden Waste
October 2024	Mon 7th	Mon 14th	Mon 21st	Mon 28th		
November 2024	Mon 4th	Mon 11th	Mon 18th	Mon 25th		
December 2024	Mon 2nd	Mon 9th	Mon 16th	Mon 23rd Black Bin Only	Mon 30th No Collection	
January 2025	Mon 6th	Mon 13th	Mon 20th	Mon 27th		
February 2025	Mon 3rd	Mon 10th	Mon 17th	Mon 24th		
March 2025	Mon 3rd	Mon 10th	Mon 17th	Mon 24th	Mon 31st	

Important Christmas, New Year and Winter Service Break Information



Your red bin will **not** be collected on Monday 30th December. Your collections will restart after New Year when we will collect your red bin on Monday 6th January and your black bin and up to three bags of side waste on Monday 13th January.

Your green bin(s) will **not** be collected on Monday 23rd December. Please continue to put your black bin out as this will be collected as normal.

Please note the Garden Waste service (green bin) is an opt-in paid for service. For more information visit www.northwarks.gov.uk/green



Your recycling guide

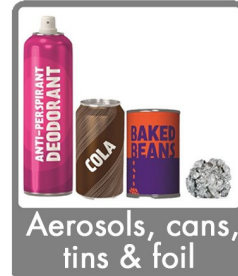
Use your red-lidded bin to recycle:



Glass bottles & jars



Plastic bottles, pots, tubs & trays



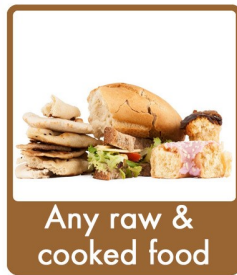
Aerosols, cans, tins & foil



Paper, card & cardboard

Put items loose in your recycling bin. No bags please.

Use your green bin for garden & food waste:



Any raw & cooked food



Tea bags & Coffee Grounds



Grass cuttings



Leaves, twigs & small branches

This is an opt in service. You can choose to have your green bin collected for an annual fee. Find out more and sign up at www.northwarks.gov.uk/green

Use your black bin for rubbish:



Non-recyclable household waste including:



Plastic packets, wrappers & film



Polystyrene



Pouches & tetrapak cartons



Rigid plastic (e.g. broken toys)