







# Rubbish and Recycling Calendar 2024/25

Your bin day is: **Monday - Week 1**

	 Rubbish	 Recycling & Garden Waste	 Rubbish	 Recycling & Garden Waste	 Rubbish	 Recycling & Garden Waste
<b>October 24</b>	Monday 7th	Monday 14th	Monday 21st	Monday 28th		
<b>November 24</b>	Monday 6th	Monday 11th	Monday 18th	Monday 25th		
<b>December 24</b>	Monday 2nd	Monday 9th	Monday 16th	<b>Monday 23rd RED BIN ONLY</b>	<b>Monday 30th NO COLLECTION</b>	
<b>January 25</b>	Monday 6th	Monday 13th	Monday 20th	Monday 27th		
<b>February 25</b>	Monday 3rd	Monday 10th	Monday 17th	Monday 24th		
<b>March 25</b>	Monday 3rd	Monday 10th	Monday 17th	Monday 24th	Monday 30th	

## Important Christmas, New Year and Winter Service Break Information



Your black bin will **not** be collected on Monday 30<sup>th</sup> December. Your collections will restart after New Year when we will collect your black bin and up to three bags of side waste on Monday 6<sup>th</sup> January and your red and green bin on Monday 13<sup>th</sup> January.

Your green bin(s) will **not** be collected on Monday 23<sup>rd</sup> December. Please continue to put your red bin out as this will be collected as normal.

Please note the Garden Waste service (green bin) is an opt-in paid for service. For more information visit [www.northwarks.gov.uk/green](http://www.northwarks.gov.uk/green)



# Your recycling guide

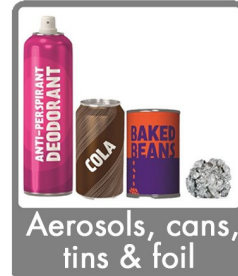
Use your red-lidded bin to recycle:



Glass bottles & jars



Plastic bottles, pots, tubs & trays



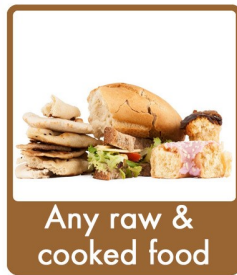
Aerosols, cans, tins & foil



Paper, card & cardboard

Put items loose in your recycling bin. No bags please.

Use your green bin for garden & food waste:



Any raw & cooked food



Tea bags & Coffee Grounds



Grass cuttings



Leaves, twigs & small branches

This is an opt in service. You can choose to have your green bin collected for an annual fee. Find out more and sign up at [www.northwarks.gov.uk/green](http://www.northwarks.gov.uk/green)

Use your black bin for rubbish:



Non-recyclable household waste including:



Plastic packets, wrappers & film



Polystyrene



Pouches & tetrapak cartons



Rigid plastic (e.g. broken toys)