







Rubbish and recycling calendar 2024/25

Your bin day is: **Friday - Week 1**

	 Rubbish	 Recycling & Garden Waste	 Rubbish	 Recycling & Garden Waste	 Rubbish	 Recycling & Garden Waste
October 24		Fri 4th	Fri 11th	Fri 18th	Fri 25th	
November 24		Fri 1st	Fri 8th	Fri 15th	Fri 22nd	Fri 29th
December 24	Fri 6th	Fri 13th	Fri 20th	Fri 27th NO COLLECTION		
January 25		Fri 3rd moves to Sat 4th RED BIN ONLY	Fri 10th	Fri 17th	Fri 24th	Fri 31st
February 25	Fri 7th	Fri 14th	Fri 21st	Fri 28th		
March 25	Fri 7th	Fri 14th	Fri 21st	Fri 28th		

Important Christmas, New Year and Winter Service Break Information



Your red/green bin(s) will **not** be collected on Friday 27th December. Your collections will restart after New Year when we will collect your red bin on Saturday 4th January and your black bin and up to three bags of side waste on Friday 10th January.

Your green bin(s) will **not** be collected on Saturday 4th January. Please continue to put your red bin out as this will be collected as normal.

Please note the Garden Waste service (green bin) is an opt-in paid for service. For more information visit www.northwarks.gov.uk/green



Your recycling guide

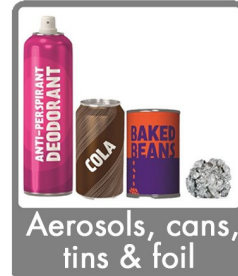
Use your red-lidded bin to recycle:



Glass bottles & jars



Plastic bottles, pots, tubs & trays



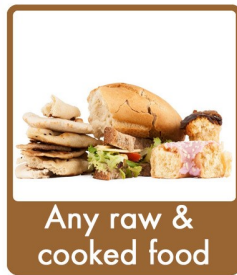
Aerosols, cans, tins & foil



Paper, card & cardboard

Put items loose in your recycling bin. No bags please.

Use your green bin for garden & food waste:



Any raw & cooked food



Tea bags & Coffee Grounds



Grass cuttings



Leaves, twigs & small branches

This is an opt in service. You can choose to have your green bin collected for an annual fee. Find out more and sign up at www.northwarks.gov.uk/green

Use your black bin for rubbish:



Non-recyclable household waste including:



Plastic packets, wrappers & film



Polystyrene



Pouches & tetrapak cartons



Rigid plastic (e.g. broken toys)