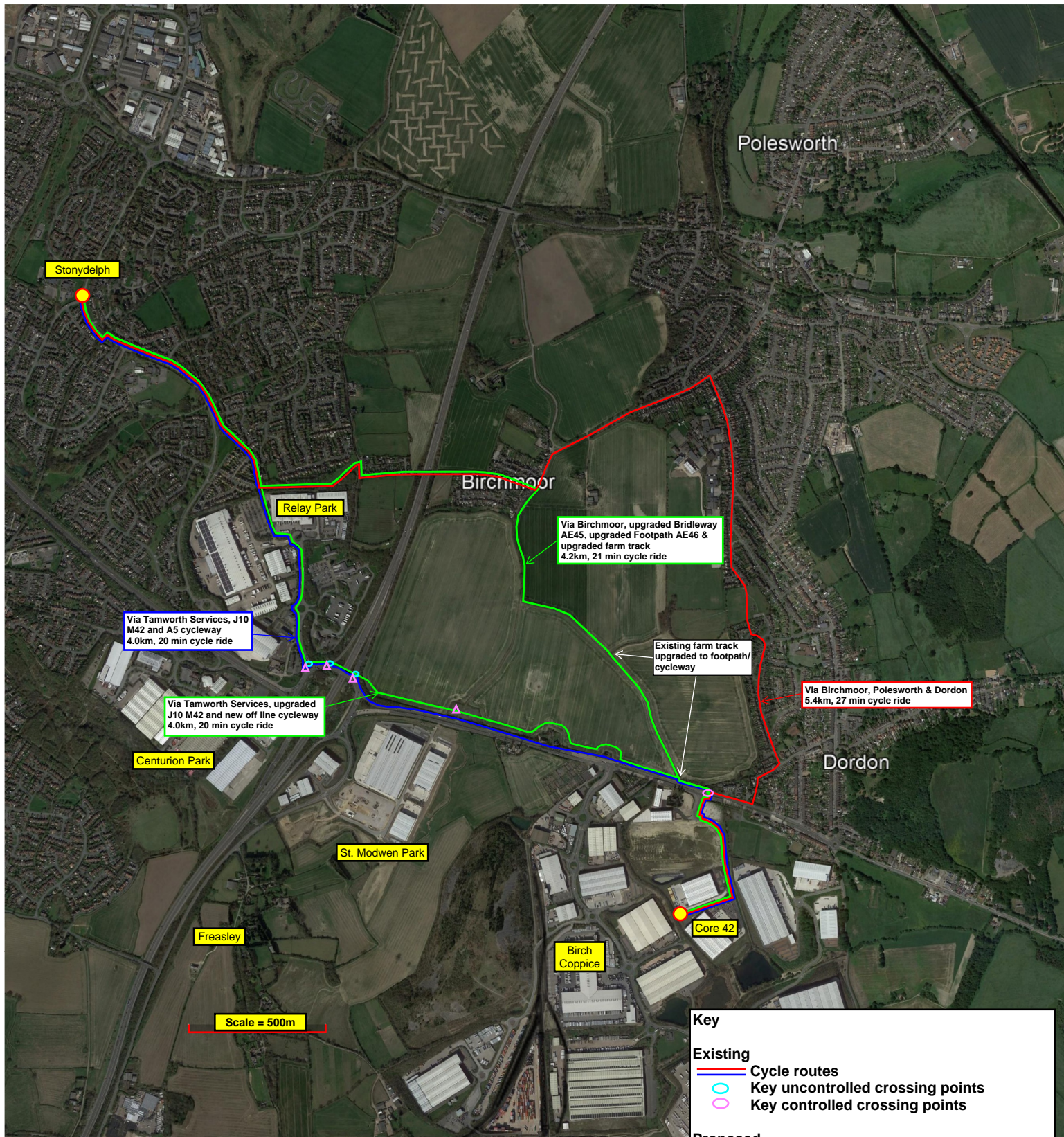


Commuter Point-to-Point Plan: Stonydelph to Core 42



Note:
Plan showing existing and proposed tarmac surfaced route options accessible by a typical road bike and Equalities Act 2010 compliant, therefore suitable for all commuters. It should be noted that with the benefit of specialist equipment, such as an off-road bike, other existing route options would be open to some (but not all) commuters. However, the use of these existing routes is not practicable for all commuters (such as those with physical and mobility impairments) or certain jobs/positions where there is an imperative to arrive clean and/or shower facilities are not readily available.

The existing and proposed routes shown are in excess of the typical 2km maximum walking distance for commuters, so possible walking routes are therefore not shown on this plan.

