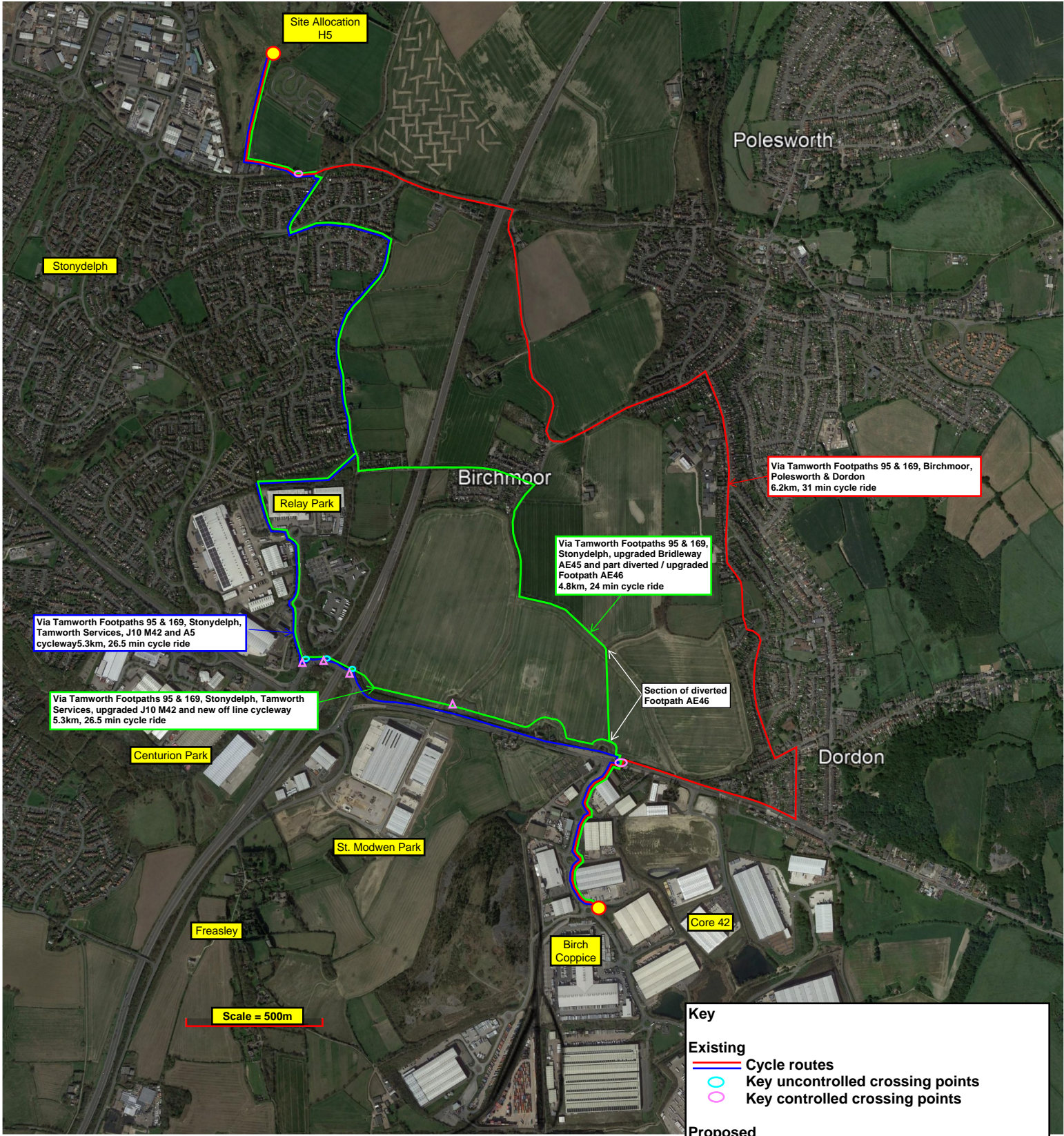


RECEIVED

17/08/2022

PLANNING & DEVELOPMENT
DIVISION

Commuter Point-to-Point Plan: Site Allocation H5 to Birch Coppice



Via Tamworth Footpaths 95 & 169, Stonydelph, Tamworth Services, J10 M42 and A5 cycleway 5.3km, 26.5 min cycle ride

Via Tamworth Footpaths 95 & 169, Stonydelph, Tamworth Services, upgraded J10 M42 and new off line cycleway 5.3km, 26.5 min cycle ride

Via Tamworth Footpaths 95 & 169, Stonydelph, upgraded Bridleway AE45 and part diverted / upgraded Footpath AE46 4.8km, 24 min cycle ride

Via Tamworth Footpaths 95 & 169, Birchmoor, Polesworth & Dordon 6.2km, 31 min cycle ride

Key

Existing

- Cycle routes
- Key uncontrolled crossing points
- Key controlled crossing points

Proposed

- Cycle routes
- Key crossings upgraded to signal control

Note:
Plan showing existing and proposed tarmac surfaced route options accessible by a typical road bike and Equalities Act 2010 compliant, therefore suitable for all commuters. It should be noted that with the benefit of specialist equipment, such as an off-road bike, other existing route options would be open to some (but not all) commuters. However, the use of these existing routes is not practicable for all commuters (such as those with physical and mobility impairments) or certain jobs/positions where there is an imperative to arrive clean and/or shower facilities are not readily available.

The existing and proposed routes shown are in excess of the typical 2km maximum walking distance for commuters, so possible walking routes are therefore not shown on this plan.