



# Climate Change Action Plan

North Warwickshire Borough Council





# Contents

Background .....	3
Where we are now.....	5
Our key targets & Commitments .....	6
How we will get there .....	7
Focus Area 1 – Travel & Transport.....	9
Focus Area 2 – Waste.....	3
Focus Area 3 – Our buildings .....	15
Focus Area 4 – Housing.....	19
Focus Area 5 – Forward planning and development management.....	22
Focus Area 6 – Supporting Communities.....	24
Focus Area 7 – Biodiversity and open space management .....	26
Monitoring and reporting on progress .....	28
Acronyms & Glossary of terms .....	29
Calculations .....	30

# Background

## What is climate change?

Climate change refers to long-term shifts in temperatures and weather patterns. Whilst some shift is natural, human activity has greatly contributed to the release of gases into the air which have and are continuing to cause global temperatures to rise. These gases include carbon dioxide and methane.

Activities such as burning fossil fuels for heating and electricity and driving petrol cars contributes to the release of these gases. In addition, deforestation can also release carbon dioxide into the atmosphere.

Greenhouse gas emissions are at their highest levels in 2 million years and the last decade was the warmest on record.

## Why we must do something

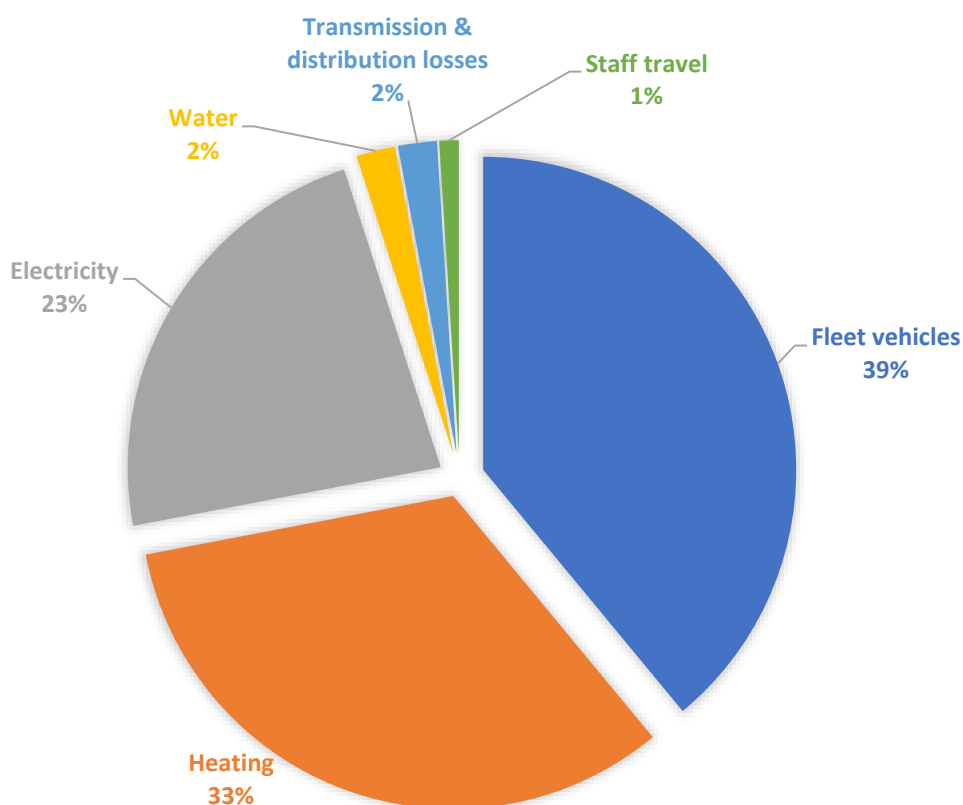
Rising temperatures and changing weather patterns have dire consequences for everyone across the planet. It is not simply a case of warmer temperatures, consequences of climate change now include:

- Melting polar ice
- Rising sea levels
- Flooding
- Catastrophic storms
- Declining biodiversity
- Habitat Loss
- Intense droughts
- Water scarcity
- Severe fires

Doing all we can to limit the global temperature rise to no more than 1.5°C is estimated to limit the worst of the damage and enable us to maintain a liveable climate.

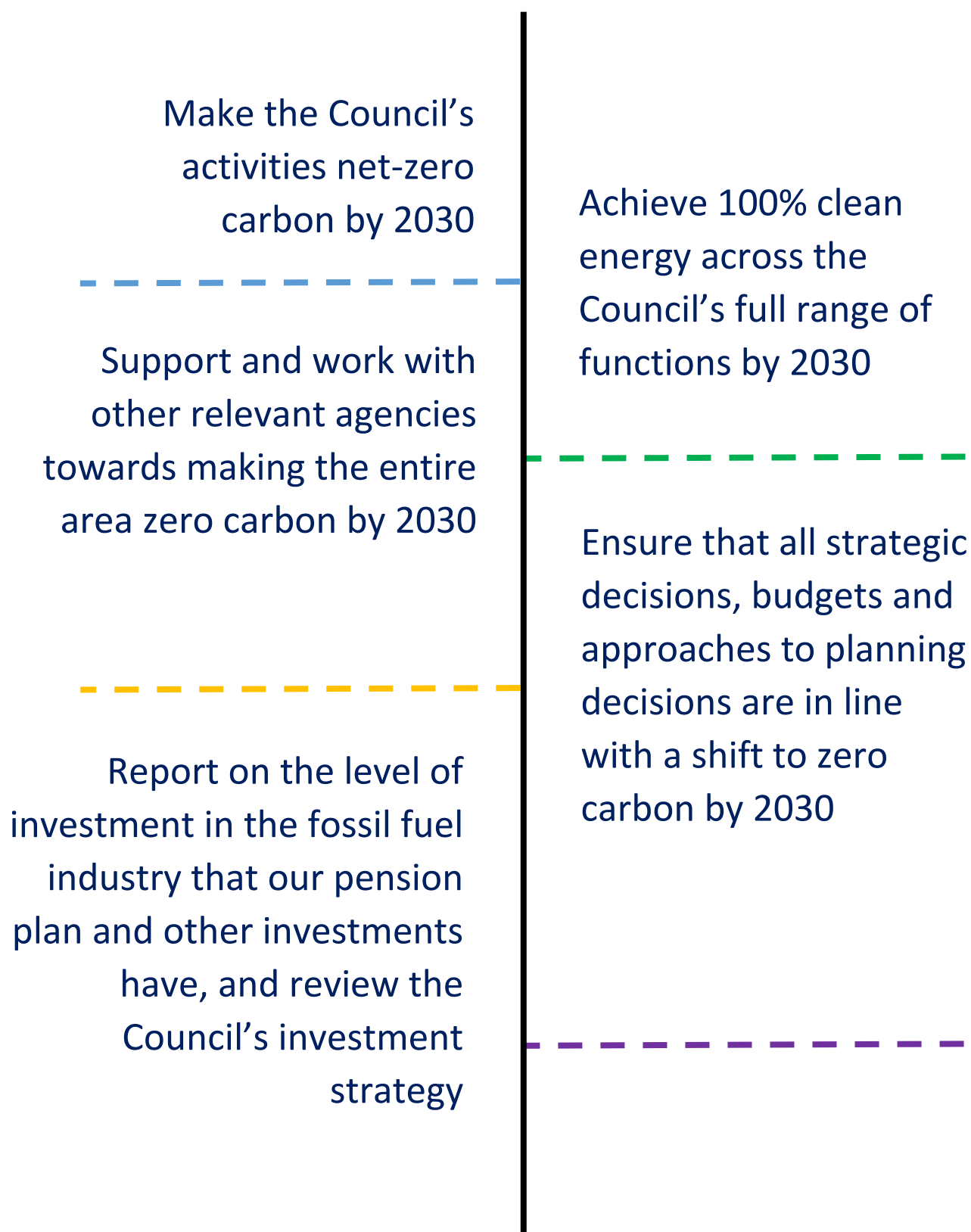
## Where we are now

The Council has calculated its carbon emissions using the Local Government Association Carbon Emissions Accounting Tool and identified that main carbon emissions originate from fleet vehicles, heating and electricity.



The Council will continue to benchmark its performance on carbon emissions against other local authorities in Warwickshire and work with partners and stakeholders (including the private sector) to ensure that our actions plan complements the work of other agencies and that best practice is shared as widely as possible.

## Our key targets & Commitments



# How we will get there

Our action plan includes climate change mitigation and adaptation.

## Mitigation

Taking action to reduce our emissions of harmful gases into the atmosphere. This helps to prevent the planet from warming to more extreme temperatures.

## Adaptation

Preparing for climate change and the impact it will have on people, the economy and the environment. Including adapting our ways of working, ensuring new developments are resilient and planning for flooding and severe weather events.

Further reading: [Climate Impacts Assessment for Warwickshire County Council](#)

The Council will carry out its own climate impact assessment and review the adaptation plans for each focus area

## We've split our action plan into 7 focus areas

- Travel and transport
- Waste
- Our buildings
- Our housing
- Forward Planning and Development Management
- Supporting communities
- Biodiversity and open space management

## Who we will work with:

We believe working with others to share knowledge, experience and skills has great benefits and ensures those with the greatest influence are leading in the right areas. Stakeholders we will work with include, but are not limited to:

- National Government
- Infrastructure & Utilities Providers
- Local Authorities/Combined Authorities/LEPS/Regional Agencies
- Transport Providers
- Commerce & Industry, including retailers & small businesses
- Farming & Food Production
- Charities, Faith & Community Groups (including Voluntary Sector)
- Health & leisure
- Education
- Individuals
- Housing providers
- Our supply chain – ensuring that the procurement of goods and services has a stronger focus on sustainability and carbon reduction

**We will work collaboratively with others to achieve joint goals:**

- Net Zero Coventry and Warwickshire by 2050
- New homes 'zero carbon ready' by 2025
- COP26 targets 2050



## Focus Area 1 – Travel & Transport

**Our fleet of cars, vans, refuse collection vehicles, tractor and a cesspool tanker produce 745 tonnes of CO<sub>2</sub> which is 38.6% of our total output**



### What we want to achieve

- Rationalise our fleet and switch to low carbon fuels, with a move to electric wherever possible as vehicles reach their end of life and need replacement
- Create a policy for staff travel, encouraging low-carbon options such as public transport, cycling, walking and eco-driving where driving is necessary
- Increase the number of electric vehicle charging points across the Borough
- Optimise waste collection routes to complete bin collections by driving the fewest miles.
- Work with stakeholders to ensure public transport provision meets the needs of our residents and supports our goals to become net-zero

### Our achievements so far

- Streamlined our fleet and reduced the number of vehicles we use by 16% since 2014.
- Reduced our diesel usage by 2% since 2013-14 saving over 12,000kg of CO<sub>2</sub>
- Switched to hybrid electric bin lifts on 46% of our refuse collection vehicles with a further 23% fitted with eco-drive hydraulic lifts
- Switched to fuel efficient gearboxes, engines, fuel save technology and introduced vehicle tracking
- Reduced staff travel to work by encouraging hybrid working.
- Introduced the Cycle2Work scheme in 2016, encouraging staff to travel by bike by providing up to 47% off the cost of bikes and equipment
- Installed 19 electric car charging points Borough wide
- In conjunction with Warwickshire County Council, developed a green travel project associated with the canal gateways into Atherstone and Polesworth
- Encouraged green travel through walking (11 local walking groups) and cycling (Bikeability) schemes

## How we will achieve our targets

### **Rationalise our fleet and switch to low carbon fuels, with a move to electric wherever possible as vehicles reach their end of life and need replacement**

We're switching to Hydrotreated Vegetable Oil (HVO) in fleet vehicles where possible. This is expected to achieve a 95% reduction in CO2 (as well as reducing other air pollutants).

We're looking into the practicality of electric refuse collection vehicles however technology in this area is not yet suitable for a large rural Borough like North Warwickshire. We'll keep working on this but this is expected to be a longer term goal. For our smaller fleet such as vans and cars we'll be moving to electric vehicles as soon as financially viable. This will be as and when vehicles reach their end of life and need replacing.

We'll further rationalise our fleet by looking at which vehicles get the lowest use and if working patterns can be adapted to enable the sharing of vehicles. Unfortunately it will be necessary to expand our refuse collection vehicle fleet to enable us to cope with expected housing growth.

### **Create a policy for staff travel, encouraging low-carbon options such as public transport, cycling and walking**

We already encourage our staff to work from home for part of the week. This isn't always possible depending on the job role. We'll develop a policy for staff travel both to work and travel to meetings and site during the working day. We'll encourage people to travel by bus, train, cycling, walking and car share. Switching to virtual meetings where possible eliminates the need to travel at all.

When our staff do need to drive, we'll investigate the option of eco-driver training for all staff who drive for work. We'll also look to introduce an efficient lower speed limit for high speed roads such as motorways. All of our fleet vehicles have trackers which we can use to monitor driver behaviour.

### **Increase the number of electric vehicle charging points across the Borough and support their introduction at other locations.**

As outlined in Warwickshire County Council's Ultra Low Emission Vehicle (ULEV) strategy 2021, we're aiming to install:

- An additional 110 charging points by 2025
- An additional 343 charging points by 2030

We will also work with partners to ensure that, where possible, EV charging is provided in more rural areas as well as in our towns. We introduced Civil Parking Enforcement in 2022. It is hoped that some of the income from these car parks will help fund these additional electric charging points. We'll also be looking into funding options from National Government wherever possible to make this happen.



### **Optimise waste collection routes to complete bin collections in the fewest miles**

In 2022 we're introducing in-cab technology which will streamline our back office functions, reduce paper and guide our drivers using the most fuel efficient routes as they are now.

Our last major overhaul to waste collection routes was in 2013 when we switched to the three bin system. There have been a lot of new properties since then which means our current routes are not as efficient as they could be. We're planning to complete an initial review of new collection routes in 2022 with a planned move to zonal working in the medium term.



### **Work with stakeholders to ensure public transport provision is greener and meets the needs of our residents and supports our goals to become net-zero**

We're working closely with Warwickshire County Council to ensure better public transport provision which is efficient, accessible & reliable, that active travel is promoted and supported (including cycling & walking) and that there is better access to, and greater integration of, alternative modes of transport across the borough. The latest Local Transport Plan which sets out the transport needs, challenges, priorities and objectives for Warwickshire is due to be published in 2022.



## **Further reading**

[Local Transport Plan \(LTP3\) – LTP4 is expected to be published in 2022](#)

[Transport Decarbonisation Plan](#)

[Future of Transport Programme](#)

[UK Transport Vision 2050](#)

## Focus Area 2 – Waste

### Key figures for 2020-21:

- **2.2 million bins emptied**
- **Almost 30,000 tonnes of waste and recycling collected**
- **46.6% recycling rate**

### What happens to the waste and recycling we collect?

#### Red Bin (Recycling)

Recycling is taken to a waste transfer station in Dordon where it is stored until there is enough quantity to take it to a Materials Recycling Facility (MRF). At the MRF it is sorted and separated using conveyor belts, optical sorters, and magnets. It is then sold onto re-processors for recycling.



#### Green Bin (Garden & Food Waste)

Garden and food waste is taken to a waste transfer station in Nuneaton where it is stored for a short time until there is enough quantity to transport it to an In-Vessel Composter (IVC). At the IVC, the material is matured at high temperatures for 4-6 weeks and turned into compost which can be spread onto farmland.



#### Black Bin (Non-recyclable rubbish)

After bulking at a waste transfer station in Dordon this is taken to an Energy Recovery Facility (ERF) in Staffordshire. At this facility the waste is burnt at over 850°C which produces steam. This steam is used to generate electricity for thousands of homes in Staffordshire. The ash leftover at the end of the process is used for aggregate to make roads.



## What we want to achieve

- Further encourage our residents to reduce, reuse and recycle and achieve a higher recycling rate
- Adapt to new regulations and support a circular economy
- Work with partners to develop and build a new state-of-the-art materials recycling facility (MRF).

## Our achievements so far

- Transport and waste are linked. Some of our achievements in this area are detailed in Area Focus 1 – Transport.
- We've invested in a state of the art MRF which is due to open in summer 2023 (more information below)
- We're working with a charity to reuse bulky waste, diverting it from landfill and towards those in need instead

## How we will achieve our targets

### Further encourage our residents to reduce, reuse and recycle and achieve a higher recycling rate

To calculate our recycling rate we look at what percentage of the total waste collected is dry recycling (from red bins), garden and food waste (from green bins) and reuse (from bulky waste collections). A higher recycling rate means our residents are recycling more.

Rubbish (black bins) is sent for energy recovery, and whilst this is much more environmentally friendly than landfill it still causes emissions of CO<sub>2</sub>. The more we can recycle, the less emissions there will be. It also simply makes sense to use things again rather than produce them from raw materials. For example, a plastic bottle put in the red bin can be recycled and used again. A plastic bottle put in the black bin is gone for good.

We'll be increasing our efforts to encourage our residents to recycle more and waste less. We'll be working with Warwickshire County Council to deliver some of these messages. Main messages will include:

- Recycle more plastics, cans, tins, paper, cardboard and glass
- Reduce contamination by putting the right things in the right bin.
- Reduce food waste by shopping smart, storing food properly and eating it.
- Reuse or donate items rather than throwing them away

**Food waste accounts for 8-10% of global greenhouse gas emissions.**

### Encourage businesses to recycle more

Working with our partners we will explore ways to make recycling more affordable and accessible for small businesses



### **Adapt to new regulations and support a circular economy**

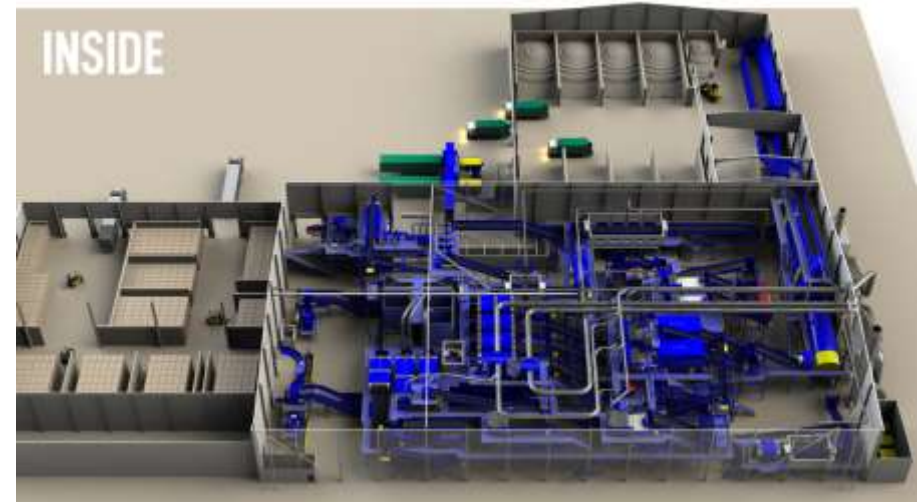
We operate in a two tier waste system where North Warwickshire Borough Council is the Waste Collection Authority (WCA) and Warwickshire County Council is the Waste Disposal Authority (WDA). We'll continue to work together to achieve the best collection and treatment options for all our waste and to adapt to upcoming regulations in the most efficient way. A circular economy ensures we keep resources in use for as long as possible, recovering their maximum value and regenerating products and materials whenever we can.

## Work with partners to develop and build a new state-of-the-art MRF

We're one of eight partner councils which have invested in the development of a new state of the art materials recycling facility (MRF) in Sherbourne, Coventry. The MRF is due to open in mid-2023 and will handle all of North Warwickshire's recycling.

The new MRF will:

- Secure a long term arrangement for the processing of materials
- Provides a technologically advanced and flexible solution which will adapt as consumer habits and waste legislation change
- Reduces reliance on manual labour in a time of industry wide staff shortages
- Delivers a high quality end product
- Aim to work exclusively with UK-based reprocessors which will vastly reduce the distance waste travels
- Brings partners together to increase bulking and haulage efficiency
- Include an educational facility and officer to provide on-site tours
- Be powered by the energy from waste facility in Coventry and on-site solar panels which will export excess energy back to the grid



## Adaptation

- Investment in the Sherbourne MRF will ensure we always have a way to recycle our materials even if the economy gets tough
- The MRF will be future-proofed to enable it to adapt to changing demographic trends, meaning different materials can be recovered in greater quantities as household outputs change
- We will adapt our collection methods to reflect more extreme weather, such as changing collection times to avoid extreme heat or cold and wearing different workwear and PPE

## Further reading

[Environment Act 2021](#)

[Resources and waste strategy for England](#)

[Warwickshire Municipal Waste Strategy](#)

[Love Food Hate Waste](#)

[Sherbourne MRF](#)

## Focus Area 3 – Our buildings

Our assets include:

- Corporate office buildings
- Sheepy Road Depot
- Leisure centres
- Industrial units
- Retail units
- Sports pavilions and community rooms
- Housing (see Focus Area 4 – Housing)

### What we want to achieve

- Rationalise our entire building estate
- Reduce our reliance on fossil fuels
- Reduce water usage
- Increase building efficiency and thermal insulation
- Continue hybrid working
- Work with our commercial tenants to make their operations more energy efficient
- Ensure our leisure facilities operate efficiently



## Our achievements so far

- Our office refit in 2013 resulted in a reduction in energy use by over a third. This is the equivalent of 41.6 tonnes of CO<sub>2</sub> per year. The refit included:
  - Replacing windows
  - Switching to LED lighting
  - Improved insulation
  - New boilers
  - New heating system
  - Open plan office layout
  - New more efficient server room
- In 2014 we built a new Leisure Centre in Coleshill to the latest design standards and fitted photovoltaic solar panels
- Upgrades to Atherstone Leisure Complex including:
  - Replacement of lights in the swimming pool and fitness suite with energy efficient LED bulbs
  - Pool filtration changed to a UV system to provide more efficient use of chemicals
- We've trained our Leisure Facilities staff in how to reduce energy usage
- We sublet our vacant areas to maximise the use of space and increase efficiency. Our sublets include Atherstone Town Council, Warwickshire Police, Department of Work and Pensions, Warwickshire County Council and the NHS



## How we will achieve our targets

### Rationalise our entire building estate

We'll review all our buildings and decide if they're still fit for purpose and utilised efficiently. We are currently working on consolidating our office space, particularly as a result of hybrid working and we will continue to do this. Rationalising our buildings will ensure that we are operating in the most carbon-efficient way and not powering and heating buildings for very little gain.

## **Reduce our reliance on fossil fuels**

We'll switch to a green energy tariff as soon as financially possible, and before 2030. We'll also ensure that any new, non-housing buildings we build include on-site renewable energy production. For existing buildings, we'll consider if on-site renewable energy production can be achieved and we'll take the same approach on Council owned land, our car parks, and industrial units.

## **Reduce water usage**

We'll do a full audit of our water use and identify areas where we can reduce this, including reuse where possible. For example by upgrading our taps and urinals.

## **Increase building efficiency and thermal insulation**

We'll review our existing buildings to see what we can do to improve their efficiency and thermal insulation. This will also be a main consideration for construction of new buildings. Any new buildings will incorporate as many low carbon measures as possible. Including co-locating services to reduce travel.

## **Continue hybrid working**

As a result of the Covid-19 pandemic our workforce quickly adapted to working from home where possible. Although restrictions have been lifted we continue to encourage our staff to work in a hybrid manner, partly in the office and partly from home so long as it meets the needs of services.

## **Work with our tenants to make their operations more energy efficient**

Our industrial unit tenants run a huge variety of businesses including automotive servicing, fitness and furniture making. We'll work with our commercial tenants to provide advice and encourage access to funding to enable them to make carbon efficiency improvements.

## **Ensure our leisure facilities operate efficiently**

We're investigating ways to:

- Circulate heat generated from heating our swimming pools
- Encourage our members to use greener methods of transport to visit our sites, including walking and cycling. To do this we'll survey all our members about their travel options and choices.
- Continue virtual classes which eliminate the need to travel at all



## Adaptation

It is important we ensure our buildings, and the services they deliver, can tolerate the impacts of climate change. Some of the measures we are considering, in addition to thorough maintenance and monitoring, are:

- Storms and flooding – temporary barriers, increasing air tightness, replacing carpets with solid flooring, increasing the capacity of guttering and ensuring thorough maintenance throughout
- Cold weather and heat waves – building insulation to reduce energy demand, thermal blinds and solar shading in the form of trees, window film and shutters. Changing work patterns.
- Drought – water efficiency measures including rainwater harvesting and grey water recycling

- Adapting our services to the impacts of climate change. For example amending our leisure centre opening hours and activity times



## Further reading

[The Future Buildings Standard](#)

## Focus Area 4 – Housing

We are the landlord for 2600 dwellings in North Warwickshire. We also work closely with other social housing landlords and housing associations in the Borough.

### What we want to achieve

- Ongoing retrofit of existing homes
- Build new homes to a low or zero carbon standard
- Engage our tenants to help us deliver solutions

### Our achievements so far

- We've been working hard to retrofit our existing properties and provide more energy efficient homes. Since 2015, 329 individual properties have had new windows fitted and 379 have had external wall insulation. Blocks of flats have also benefitted from new windows and external wall insulation
- Through our roofing programme we deliver 50 new roofs annually
- We've fitted properties with loft insulation to further improve their energy efficiency and save tenant money



- Through our replacement heating scheme we deliver 150 to 200 new efficient gas heating systems annually
- Low energy lighting has been installed in our blocks of flats as part of electrical upgrades
- Over the last six months, thanks to Green Homes funding from central Government, we've installed energy efficient Air Source Heat Pump systems in properties across the Borough to replace inefficient and expensive heating

- All new properties developed by the Council since 2020 have electric vehicle charging provision
- All new properties developed by the Council between 2015 and 2018 have solar panels
- Our new build regeneration schemes have ensured that local shop facilities have been provided to support the new developments, reducing the need to for those residents to travel by car



## How we will achieve our targets

### Retrofit of existing Local Authority homes

To date programmes of work to improve energy efficiency have considered the construction of and facilities in the property. In future this information will be considered in combination with the information from our bespoke property energy efficiency database. The combined information will promote our understanding of the needs of the stock and direct future programmes of work. Over time we will consider setting a minimum energy performance that we want to achieve for all our homes.

### Private Social Housing Providers

There are 1350 housing association properties to rent in the Borough. We will promote the benefit of retrofit schemes with local housing association providers, seek data from them about their stock and work in partnership were possible to deliver energy efficiency measures.

### Build new homes to a low or zero carbon standard

When developing new homes we will seek designs which include energy efficiency considerations and include renewable energy measures where possible. We will engage partner housing associations and influence them to do the same. It is our goal that new homes are net-zero ready. Modern methods of construction will be considered.

When considering new developments we will reflect on Forward Planning guidelines with regard to having accessible local services and alternatives to using vehicles for transport.

## Adaptation

We will consider how properties can be adapted respond to the impacts of climate change – this includes prevention from flooding, protection from hotter weather as well as energy efficient homes in colder weather.

We will promote our energy efficiency measures and engage our tenants in our plans so that we can work with together to meet the challenges.

## Further reading

[Future Homes Standard](#)



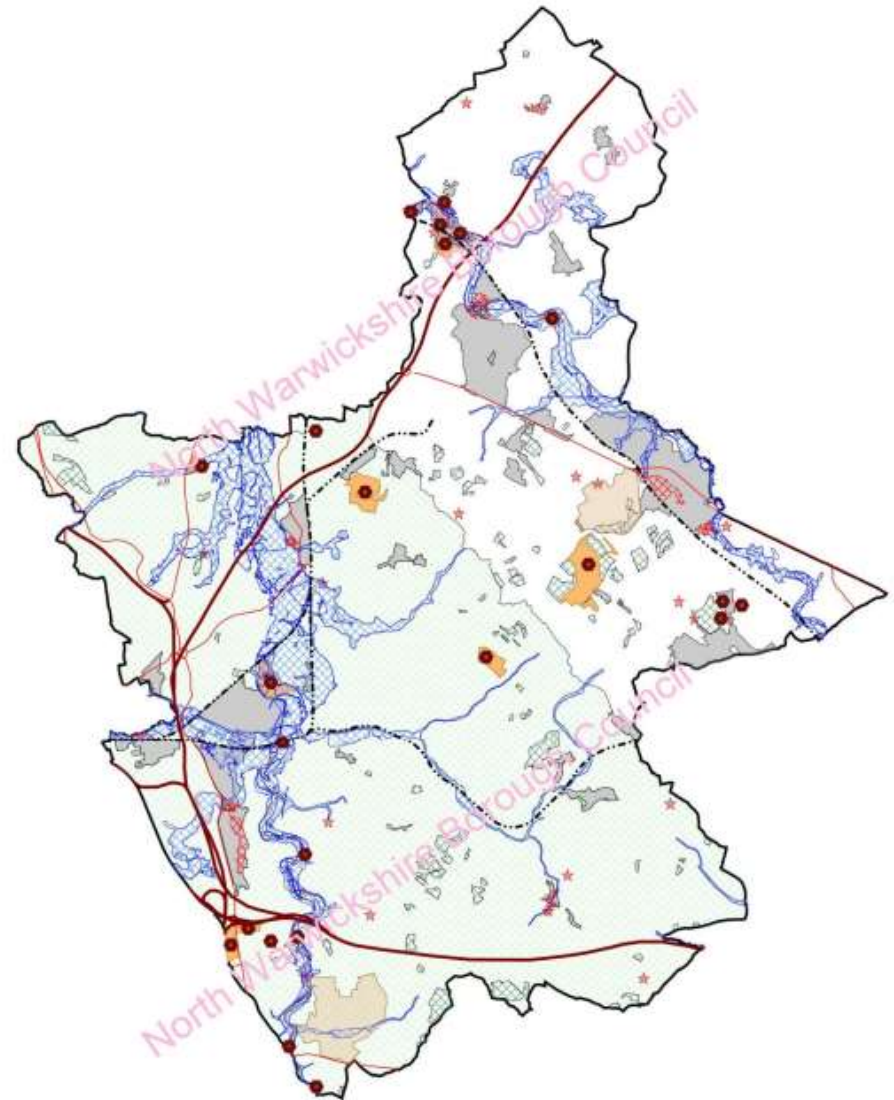
# Focus Area 5 – Forward planning and development management

## What we want to achieve

Our goal is to achieve local and national planning policy with climate change at the forefront. This will include new and existing small and large scale developments both residential and non-residential and focus on both mitigation and adaptation measures.

## Our achievements so far

- Adoption of the latest Local Plan in September 2021 with a focus on sustainable and inclusive design.
- Climate change considerations and implications are now required for every major planning application





## How we will achieve our targets

We will:

- Work with partners to deliver Local Transport Plan 4 with focus on reducing emissions and encouraging walking and cycling. This is due to be published in 2022
- Develop design codes and supplementary planning documentation encompassing climate change mitigation and adaptation
- Encourage landowners and developers to utilise space for renewable energy production
- Work closely with stakeholders on setting tougher minimum standards for green space and biodiversity within local developments and the protection of existing habitats
- Encourage greater use of brownfield sites and existing buildings where practicable
- Ensure that drainage strategies and flood risk assessments take into account the impact of a changing climate
- Complete master planning for Strategic Allocations with walking and cycling routes through sites, making essential local services more accessible without the need to travel by car
- Encourage modern methods of construction

## Further reading

[North Warwickshire Local Plan \(adopted September 2021\)](#)

[National Planning Policy Framework \(NPPF\) 2012/2019](#)

[Section 19\(1A\) of the Planning and Compulsory Purchase Act 2004](#)

[Climate Change Act 2008 \(as amended 2009\)](#)

[Environment Act 2021](#)

[Planning for the Future](#)

[Future Homes Standard](#)

[Future Buildings Standard](#)

[British Energy Security Strategy](#)





# Focus Area 6 – Supporting Communities

## What we want to achieve

- Support local communities to deliver low carbon projects and climate adaption initiatives
- Communication of key messages and advice for residents, groups and businesses
- Promote localism and encourage greater community involvement and action at a local level



## Our achievements so far

Our Community Development team have supported the creation of:

- Arley community orchard
- Shuttington Wildflower meadow
- Walking for health groups



## How we will achieve our targets

### Support local communities to deliver low carbon projects and climate adaption initiatives

We'll support Town and Parish Councils, voluntary and community groups in the delivery of low carbon projects, improving sustainability, and climate adaptation initiatives. We'll do this by signposting to advice, training and funding opportunities.

Working with stakeholders in the sub-region we'll establish a climate change forum to help connect individuals and groups to pool resources and share best practice

### Promote localism

We will actively promote local initiatives which encourage:

- Growing your own food
- Reducing food waste through redistribution and smarter cooking
- Tackling food poverty by working with local stakeholders
- Shopping local and plastic free e.g. markets and refill shops
- Health and wellbeing
- Swap shops and repair cafes

### Training our staff about climate change and energy efficiency

We'll investigate ways to ensure all our staff have a basic awareness of climate change and energy efficiency making it easier for residents to get advice and support.

### Communication of key messages and advice for residents, groups and businesses

We'll communicate key messages and advice on climate change and actions people can take which to suit all budgets. We'll also work with schools and other education & training providers to engage with young people and encourage them to develop knowledge and skills in climate change topics, including sustainable development & the green economy.

### Adaptation

Climate change is happening and the impacts will be felt hardest by the most vulnerable in the community. We'll do everything we can to support those impacted by climate change by adapting our service delivery and support to suit the changing environment.

### Further reading

[Warwickshire County Council – Grants and Funding](#)

[Living in North Warwickshire – advice, signposting and funding](#)

[North Warwickshire BC – Climate Change Webpage](#)

# Focus Area 7 – Biodiversity and open space management

North Warwickshire covers an area of 106 square miles

## What we want to achieve

- Achieve biodiversity net gain
- Encourage landowners and occupiers to use their land in sustainable and biodiverse ways
- Identify areas of Council land which can be used for renewable energy generation
- Protect existing habitats and local nature reserves

## Our achievements so far

- We're working with Warwickshire Wildlife Trust on the development and delivery of a Green Recovery Plan within the "Love Your River Cole" project
- Through the Green Space Strategy we encourage natural play as an alternative to the installation of traditional play equipment
- Community tree planting schemes in Coleshill, Dordon and Piccadilly, with a further project currently being developed in Ansley and Ansley Common
- Successful application for Local Authority Treescape Funding, through which over 350 trees will be planted in Polesworth, Piccadilly and Wood End





## How we will achieve our targets

### Achieve biodiversity net gain

Our next Green Space Strategy we will include focus on climate change mitigation.

We'll start by undertaking a land and open space audit to identify areas of Council owned land which could be used in more sustainable and biodiverse ways. We'll investigate and consult and engage with our residents on 'rewilding' more of our open spaces and verges.

Working with local, regional and national stakeholders together we'll be planting a tree for every resident. We'll be reinstating hedgerows and developing green corridors too as they provide huge benefits for the natural environment.

### Encourage landowners and occupiers to use their land in sustainable and biodiverse ways

We'll engage with local large landowners including farmers to agree common targets and actions to using land in a sustainable and biodiverse ways.

We'll engage with smaller landowners and occupiers such as schools, colleges and sports clubs to do the same, and to encourage them to make best use of their open space. For example using nature as a classroom, composting, wildflowers, nature habitats and increasing biodiversity.



## Identify areas of Council land which can be used for renewable energy schemes

As well as encouraging landowners and developers to use land for renewable energy, we'll be auditing our own land to see where we could do this too.

## Adaptation

Increasing biodiversity not only has great carbon-cutting benefits, it can also be used to prevent flooding. We'll investigate and implement eco-engineering and landscaping to prevent flooding and reverse habitat loss.

## Further reading

[North Warwickshire's Green Space Strategy](#)

[Queens Green Canopy](#)

[Warwickshire Wildlife Trust](#)

[Biodiversity Net Gain Regulations](#)



# Monitoring and reporting on progress

## How we will be measured

Our work on climate change is taken seriously at all levels within the Council and is governed by the Community and Environment Board. The Board meets approximately every two months to review and decide on a range of topics, including climate change. Decisions made by the Board are ratified at Full Council which also meets regularly throughout the year.

The Council will work to develop measurable targets around each of its key focus areas and set out a timetable for implementation. The Community & Environment Board will review progress on an annual basis and report on progress against targets. This action plan will be reviewed and updated every three years to ensure that the plan stays on track to deliver its key aims.

We are working to set up a Climate Change Partnership Group which will include residents, Councillors, young citizens, businesses and other relevant parties.

We also work in close collaboration with our stakeholders, such as Warwickshire County Council, and we are held accountable by these joint working relationships.

## How we will keep you informed

We commit to publishing annual updates detailing our progress. We also plan to publish updates of our achievements as we progress. We will promote activities and initiatives (our own and those of partners and stakeholders) on our website and through social media. We will signpost information, resources and funding opportunities.

We have set up a dedicated area on our website for Climate Change. Find out more at: [www.northwarks.gov.uk/climatechange](http://www.northwarks.gov.uk/climatechange). Here you will find relevant information on the Council's activities, progress against the action plan, key milestones and targets, and plans and policies relating to climate change as they are developed over time.





## Acronyms & Glossary of terms

PiV	Plug in vehicle
EV	Electric Vehicle
ICE	Internal Combustion Engine (relating to vehicles)
LGV	Large Goods Vehicle
HGV	Heavy Goods Vehicle
RCV	Refuse Collection Vehicle
NPPF	National Planning Policy Framework
LTP	Local Transport Plan
ULEV	Ultra-Low Emissions Vehicle
WCC	Warwickshire County Council
SPD	Supplementary Planning Document
HVO	Hydrogenated or Hydrotreated Vegetable Oil

# Calculations

0.233kg of CO<sub>2</sub>e per kwh of electricity

0.184kg of CO<sub>2</sub>e per kwh of gas

2.62kg of CO<sub>2</sub>e per litre of diesel