

**To: The Chairman and Members of the  
Safer Communities Sub-Committee**

**(Councillors D Humphreys, D Clews, Davey, Farrow,  
Gosling, Jarvis, Jordan, Moss, Osborne, K Parker and  
O Phillips)**

**For the information of the other Members of the Council**

**For general enquiries please contact Democratic Services  
on 01827 719237 or via e-mail:  
democraticservices@northwarks.gov.uk**

**For enquiries about specific reports please contact the  
officer named in the reports.**

**This document can be made available in large print and  
electronic accessible formats if requested.**

## **SAFER COMMUNITIES SUB-COMMITTEE**

**14 NOVEMBER 2022**

The Safer Communities Sub-Committee will meet on Monday 14 November 2022 at 6.30pm in the Council Chamber at The Council House, South Street, Atherstone, Warwickshire.

The meeting can also be viewed on the Council's YouTube channel at [NorthWarks - YouTube](#).

### **AGENDA**

- 1 Evacuation Procedure.**
- 2 Apologies for Absence / Members away on official Council business.**
- 3 Disclosable Pecuniary and Non-Pecuniary Interests.**

4 **Minutes of the meeting of the Sub-Committee held on 27 June 2022** – copy herewith, to be approved as a correct record and signed by the Chairman.

5 **Public Participation**

Up to twenty minutes will be set aside for members of the public to put questions to elected Members.

Members of the public wishing to address the Board must register their intention to do so by 9:30am two working days prior to the meeting. Participants are restricted to five minutes each.

If you wish to put a question to the meeting, please register by email to [democraticservices@northwarks.gov.uk](mailto:democraticservices@northwarks.gov.uk) or telephone 01827 719221/719226/719237.

Once registered to speak, the person asking the question has the option to either:

- (a) attend the meeting in person at the Council Chamber;
- (b) attend remotely via Teams; or
- (c) request that the Chair reads out their written question.

If attending in person, precautions will be in place in the Council Chamber to protect those who are present however this will limit the number of people who can be accommodated so it may be more convenient to attend remotely.

If attending remotely an invitation will be sent to join the Teams video conferencing for this meeting. Those registered to speak should dial the telephone number and ID number (provided on their invitation) when joining the meeting to ask their question. However, whilst waiting they will be able to hear what is being said at the meeting. They will also be able to view the meeting using the YouTube link provided (if so, they made need to mute the sound on YouTube when they speak on the phone to prevent feedback).

## **ITEMS FOR DISCUSSION AND DECISION (WHITE PAPERS)**

- 6 **North Warwickshire Community Safety Partnership Update – Report of the Chief Executive**

### **Summary**

This report provides Members with an update on recent activities with the North Warwickshire Community Safety Partnership. The report includes information about progress with the agreed priorities from the Strategic Assessment 2020/21 and latest crime statistics.

The Contact Officer for this report is Julie Taylor (719437).

- 7 **Fly Tipping**

The Corporate Director – Streetscape will give a verbal update on Fly Tipping.

STEVE MAXEY  
Chief Executive

**MINUTES OF THE SAFER COMMUNITIES  
SUB-COMMITTEE**

**27 June 2022**

Present: Councillor D Humphreys in the Chair.

Councillors D Clews, Davey, Farrow, Gosling, Jarvis, Jordan, and O Phillips.

Apologies for absence were received from Councillors Osborne and Parker.

**1 Disclosable Pecuniary and Non-Pecuniary Interests**

None were declared at the meeting.

**2 Minutes of the Meeting of the Safer Communities held on 21 March 2022**

The minutes of the meeting held on 21 March 2022, copies having been previously circulated, were approved as a correct record and signed by the Chairman.

**3 North Warwickshire Community Safety Partnership Update**

The Chief Executive updated Members on recent activities with the North Warwickshire Community Safety Partnership.

**Resolved:**

**a That Members considered the updates and identified areas for further scrutiny and consideration to the Senior Policy Support Officer; and**

**b That Members noted progress of the North Warwickshire Community Safety Partnership Plan 2021/22.**

**4 Fly Tipping Progress Report**

The Chief Executive updated Members on the incidents of fly tipping across the Borough and the steps which the Council is taking to tackle the problem.

**Resolved:**

**That the report be noted.**

Councillor D Humphreys  
Chairman

## Agenda Item No 6

### Safer Communities Sub-Committee

14 November 2022

#### Report of the Chief Executive

#### North Warwickshire Community Safety Partnership Update

### 1 Summary

- 1.1 This report provides Members with an update on recent activities with the North Warwickshire Community Safety Partnership.
- 1.2 The report includes information about progress with the agreed priorities from the Strategic Assessment 2021/222 and latest crime statistics.

#### **Recommendation to the Sub-Committee**

- a That Members consider the update and identify any areas for further scrutiny and consideration; and**
- b That Members note progress of the North Warwickshire Community Safety Partnership Plan;**

### 2 Consultation

- 2.1 Consultation has taken place with the relevant Members and any comments received will be reported at the meeting.

### 3 Background

- 3.1 The Sub-Committee has previously received reports from the North Warwickshire Community Safety Partnership regarding progress with the actions included in the partnership plan. The last report was received in June 2022.
- 3.2 The North Warwickshire Community Safety Partnership prepares a Partnership Plan considering the findings of the Strategic Assessment. This plan sets out our priorities for the coming year.
- 3.3 We have set ourselves challenging priorities to protect our people and communities from violent crime, make our roads safer, prevent and reduce crime in our rural communities, and to prevent and help the police detect house burglary, vehicle crimes and robbery.

3.4 North Warwickshire is a low crime area however we do experience crime and disorder problems and as a result the fear of crime amongst residents is often higher than we would hope.

3.5 Considering the findings of the North Warwickshire Strategic Assessment 2021/22 the following the North Warwickshire Community Safety Partnership core priorities are:

- **Violent Crime** - With a focus on knife crime, domestic violence and alcohol related violence.
- **Serious Acquisitive Crime** - With a focus on residential burglary dwelling, vehicle crime and personal robbery.
- **Rural Crime** - Based upon the rural and wildlife crime strategy definition.
- **Road Safety** - With a focus on traffic accidents resulting in killed and serious injuries

3.6 Cross Cutting Themes - There are cross cutting themes which we consider represent a risk to community safety in North Warwickshire. These are:

- **Vulnerability and Exploitation** – Activities to reduce individual and community vulnerability are a golden thread that weaves through all our planning and interventions. Key amongst our interventions is: Protecting people from harm; tackling county lines drug dealing; and other reducing and mitigating risks associated with serious organised crime groups.
- **Reducing Re-Offending** – The partnership will support the Warwickshire Reducing Re-Offending Strategy. Our aim is to stop offenders from committing crime by supporting a multi-agency enforcement activity and ensuring that all offenders can easily access support services to enable them to tackle problems of drug and alcohol addiction, homelessness, benefits, and access to employment and education.
- **Improving Public Perceptions of Safety** - The partnership will work to protect local communities from harm and empower individuals, parish councils and communities to protect themselves. We will also promote positive community safety and crime prevention communications whenever possible. This will follow the steer from research carried out by the National Policing Improvement Agency which shows that information about crime and policing positively informs and influences public perceptions about crime within their neighbourhoods

**Areas of Concern** – These are issues that have been identified as emerging issues. They are actively monitored by the partnership and include:

- **Hate Crime** - the partnership will support the county wide approach to tackle hate crime through the work of the Warwickshire Hate Crime Partnership.

- **Prevent** - the partnership will support the county wide approach to the Prevent strategy.
- **Anti-Social Behaviour** - the partnership will monitor and where necessary respond to personal, nuisance and environmental anti-social behaviour including deliberate small fires

3.7 The Community Safety Partnership delivers local projects as detailed in the partnership plan and influences many of the countywide services to ensure residents in North Warwickshire get a fair share in service provision.

3.8 Attached at Appendix A is a copy of quarter 1 Community Safety Performance Monitoring Report covering the period of April-June 2022. Quarter two report should be received imminently, and any significant changes will be reported at the meeting.

3.9 The Sub Committee will note that the CSP priorities were agreed as part of the Strategic Assessment process. These were previously reviewed annually but will now be done every 4 years which means that the current priorities will remain in place until March 2024. Warwickshire County Council have held Countywide MoRiLE scoring sessions which enable discussions to be had to identify any new/emerging issues across the County. These are as follows:

- Session 1 -SAC, Knife Crime and Business Crime
- Session 2 -VAWG (including domestic abuse, harmful practices, rape and sexual offences)
- Session 3 - Exploitation, County Lines, SOC, Substance Misuse
- Session 4 – Anti Social Behaviour

3.10 Warwickshire County Council will inform the district CSP's of any specific emerging issues and present these to their Q3 22/23 CSP Board where board members can decide whether to add it to the priorities. The intention is not to remove any priorities at that point, just to add any new ones, if needed.

3.11 The quarter 1 report provides an overview of recorded crime and disorder in North Warwickshire and shows the following position, comparing back over the last 12 months plus three-year average.

#### 4 **NW Community Safety Partnership Performance**

- **Violent Crime** – Violence with and without injury offences are now at volumes below last year but remain higher than the 3-year average. However, it is likely that changes to Home Office recording since 2018 is responsible for most of the higher trend in **violence without injury offences**, with current volumes possibly now 'typical' for the borough. **Violence with injury** offences this quarter were slightly more likely to occur in a public place (53% of offences), with only 1 offence involving a knife. Repeat locations were mainly at home addresses but 6 public locations experienced repeat offences during this quarter, including Hartshill School.

- **Wounding Offences** – After a much higher trend of S18 and 20 wounding offences during 21/22, volumes during quarter 1 this year have reduced, although S18 offences specifically remain higher than the 3-year average. This suggests that this offence type is a risk area for the CSP. None of the wounding's this quarter involved a knife and offences continue to occur in both public places and home addresses in equal volumes. No offences were repeats this period, with offences spread out across several wards.
- **Knife Crime** – Violent offences involving a knife continue to show lower volumes for North Warwickshire Borough. However, offences involving a weapon have almost doubled compared to last year, occurring in both public places and domestic environments. This may indicate a positive trend of improved identification of individuals carrying weapons. School suspensions due to the 'use or threat of an offensive or prohibited weapon' in schools in the borough continues to increase and to be a significant area of concern. Up to spring term 20/21 there were 16 suspensions in North Warwickshire Borough because of this behaviour, which is the highest in the county. However, volumes of children in the YJS cohort linked to knife and weapon related offences remain level with the previous year. The increased prevalence of knives within schools may be a result of possible improved searching/identification in schools, rather than actual usage of the knife to commit an offence. Schools affected include Hartshill School, Kingsbury School, Outwood's Primary School, Coleshill School and Polesworth School.
- **Alcohol related violence** – Volumes of violent offences involving alcohol remain well below last year and the 3-year average.
- **Serious Acquisitive Crime** – As expected, many areas of serious acquisitive crime are beginning to return to volumes seen prior to the pandemic, which is why most areas are showing as increases compared to last year. As identified in the quarter 4 report, thefts of a vehicle are an emerging area of concern for the CSP, with volumes much higher than the 3-year average. A breakdown of the most affected wards is shown on page 7, and this highlights that offences have occurred in high volumes in the East, South and West of the borough. Analysis of the vehicle thefts this quarter show:
  - Most likely to occur at a home address (62% of offences).
  - For offences in a public place, hotel car parks have been specifically targeted.
  - Most vehicles were secure.
  - Most common vehicles stolen were motorbikes and vans. Range Rovers were also noted.
  - Several offences were domestic related where the suspect and victim knew each other.
- **Personal robbery** offences remain at lower volumes than in previous years, although seasonal trends suggest higher volumes are likely to occur over the next quarter.
- **Rural Crime** – Offences recorded as part of the Rural and Wildlife Crime Strategy continue to remain much lower than the long-term trend. This is of



specific note this quarter as seasonal analysis suggests that volumes of this type of offence would normally peak in the borough during quarter 1.

- **KSI** – Volumes of KSIs in the borough have increased significantly compared to last year and the 3-year average. However, it is likely that the higher volumes are in line with seasonal trends usually seen in quarter 2, with several other boroughs/districts also seeing high volumes this quarter. There have been 3 fatal incidents in North Warwickshire Borough this quarter which is higher than the total number of fatal incidents in the borough for all last year. This therefore identifies road safety as an area of concern for the CSP.
- **Perception of Crime** – available data from the StreetSafe\* tool indicates that 20% of the 404 responses in Warwickshire between 2nd September and 14th July 2022 related to areas in North Warwickshire Borough (84 responses). There have only been 2 responses relating to North Warwickshire Borough in quarter 1, and for that reason there has been no change to the key findings highlighted in previous reports:
  - Most reports came from the Northern part of the borough.
  - Badly lit areas were the most prominent environmental concern.
  - Where stated, ‘verbal harassment from groups of strangers’ and/or ‘feeling like you are being followed’ were the main behavioural concerns.
  - Evenings and overnight (from 4pm onwards) were the most likely time for incidents to occur. Analysis as part of the Safer Streets project has also identified 3 hotspots for responses – Newton, Regis and Warton Ward, Polesworth/Dordon and Coleshill.
- **Exploitation** – Reported offences of exploitation and modern slavery are at very low volumes and there have not been any referrals to Children and Families Front Door (previously MASH) from North Warwickshire Borough this quarter. This may suggest continued lack of identification and awareness in the borough or a genuine low volume of these types of offences.
- **Schools Exclusions** - Persistent absence from school continues to be an issue for the borough, with the highest rates in the county for both secondary schools and primary schools. Suspension rates for secondary school pupils in the borough are also above the county average, identifying school children as an area of specific concern within vulnerability in the borough.
- **Domestic Abuse** – Volumes of domestic abuse offences in North Warwickshire Borough are lower than last year but remain higher than the 3-year average. However, as highlighted, a large proportion of this increase is due to Home Office recording changes since 2018. It is inferred that volumes across the county are likely to now be at ‘typical’ levels. Referrals to support agencies remain high in the borough, despite the reduction in reported offences compared to last year. This suggests that domestic abuse remains a concern for the CSP.
- **Hate crime** – Offences have significantly reduced this quarter, compared to the trend for higher volumes during the last year. North Warwickshire Borough is also the only borough to show reductions compared to the 3-year average.

Racist hate crime remains the most prominent in North Warwickshire Borough and indeed the county, although disability related incidents are also of note to the borough.

- **Positive areas:** • Most SNT areas have seen reductions in domestic abuse offences compared to the same period last year. • The East SNT area has seen reductions in violence with injury offences compared to Q1 last year.
- **Areas of concern:** • All SNT areas have seen increases in thefts of motor vehicle compared to Q1 last year. • Fillongley, Kingsbury and Water Orton Wards have seen increases in all areas of concern here, compared to last year.

## 5 Partnership Plan 2022/23 – Quarter 1 Updates

5.1 The North Warwickshire Community Safety Partnership has a statutory requirement to prepare a Partnership Plan based upon the findings of the annual Strategic Assessment. The existing Partnership Plan has been reviewed and updated in line with the agreed priorities and recommendations identified in the 2020/21 Strategic Assessment.

5.1.1 The Community Safety Partnership delivers local projects as detailed in the partnership plan and influences many of the countywide services to ensure residents in North Warwickshire get a fair share in service provision. The North Warwickshire Responsible Authorities Group agrees the priorities and a summary of the updates follow:

### 5.2 Problem Solving Meetings

Chaired by Inspector Allison Wiggin, Problem Solving Meetings are held monthly where problem solving plans are discussed. These are informed by the latest crime statistics, any emerging issues raised by partners and the Police. Problem Solving plans are then identified. The latest meeting held in September considered issues including rising levels of bike nuisances, fly tipping and deliberate fires, travellers and begging in Long Street and ASB in the Market Square, Atherstone.

### 5.3 Seasonal trends and engagement events

Production of seasonal trends data has been compiled to help inform campaign work and crime prevention activities over the next 12 months. This is discussed at every Problem-Solving Meeting to try and get ahead of the curve and undertake timely engagement events.

#### 5.4 Off road bikes

Atherstone and Coleshill SNT have worked with the Rural Crime Team focusing on targeting hot spot off road motorbike nuisance areas. High visibility patrols have included Ansley Common recreational ground (Brett's Hall) and Kingsbury Water Park. At Kingsbury Water Park with the help of the rangers 2 stolen bikes were recovered and 2 people arrested) and at Brett's Hall target hardening measures are being considered to tackle the problem. Risk assessments are being carried out and costs plans put together for all priority locations alongside target hardening the locations against illegal encampments. A bid application has been made to the Office of the Police and Crime Commissioner to address community concerns in relation to off road vehicle nuisance in North Warwickshire. The work will use a more investigative and intelligence-driven approach to help identify offending riders, disrupt illegal activity and offending vehicles.

#### 5.5 Fly tipping and deliberate fires

- A fly tipping working group has been set up to address the illegal dumping of waste in North Warwickshire. The nature and scale of tipped waste has varied in scale significantly from a single bin bag of waste to large quantities. Work has been undertaken to look at the process from collecting, preserving evidence, cost etc.
- There are currently 43 active fly tipping cases.
- A multiagency approach has been undertaken. Commencing 26 September 'Operation merge' was held. This was a joint operation between the Police, NWBC, Environment Agency, NFU and Fire and Rescue.
- An application was made to the Office of the Police and Crime Commissioner to use an underspend to purchase a camera solution to provide targeted action. This is likely to be in Fillongley.
- In the last month there has been a spate of fly tipping incidences at Lower House Farm Lane. Since improvements have been made at this location no further fly tipping has occurred however there has been a tip at Church End, Ansley. This went viral and the incident is now being investigated. North Warwickshire are working with Nuneaton and Bedworth Borough Council on this case.
- During the summer Warwickshire Fire and Rescue and the Safer Neighbourhood Team have been working together and providing advice about staying safe in the hot weather to prevent wildfires under the banner – 'Be Wildfire aware' campaign.
- Seasonal safety messages will be shared via social media in relation to bonfires and fireworks.

#### 5.6 Travellers

- During 2022 there has been several illegal encampments including
  - Cinders Lane Austrey (Highways)
  - Coppice Lane Middleton (Private field)
  - Coleshill Manor
  - North Warwickshire Recreation ground, Polesworth.
  - Piccadilly recreation ground

- Purley View Recreation ground, Mancetter.
- Royal Meadow Drive Sports field Atherstone.
- The Queen Elizabeth Academy, Atherstone

Work is being undertaken to address site improvements with longer term solutions.

### 5.7 **Begging in Long Street and ASB Market Square**

Following several ASB reports several community protection warnings have been issued. Work is ongoing.

## 6 **CSP Partnership Plan Updates**

The North Warwickshire Community Safety Partnership updates include:

**Violent Crime** - With a focus on knife crime, domestic violence and alcohol related violence. The performance data for this period has shown increase with violence without injury, Section 18 wounding and possession of articles with a blade or point.

**Big Conversation** - The first SWPB Big Conversation event is being held on Thursday 13 October 2022, at the British Motor Museum. The event will help shape the delivery plan for the new strategy and provide an overview about the new Serious Violence Duty.

**Hartshill School** are undertaking several interventions that relate to the reduction of violent crime. There is a Peer Mentor who works with several students (either 1-2-1 or in groups) addressing topics including behaviours and attitudes relating to violence. All year groups have or will be taking part in the 'Choices and Consequences Programme' that covers knife crime and the use of other forms of violence. An introduction session for the mentors in violence prevention schools programme was held before the summer term. Hartshill School sessions start in September. PC Jenkins has provided drop-in surgeries for students to discuss any concerns in or outside of school.

**Loudmouth: Working for Marcus** – The Loudmouth 'Working for Marcus' theatre programme are going into Hartshill and Kingsbury School on the following dates: Hartshill - Working for Marcus 01/12/22 and Kingsbury - Working for Marcus 18/11/22, 25/11/22 and 02/12/22. This theatre programme teaches students about a wide range of child exploitation issues including child sexual exploitation, exploitation into crime e.g., county lines and knife crime.

Aspire in Arts - Anti Knife Crime workshop - Kingsbury School have received workshops delivered by anti-knife crime activist Alison Cope whose son was murdered eight years ago in Birmingham. He was an up-and-coming grime/rap artist and was well-known on the scene. Alison tells the story of her son's life, the devastating consequences of carrying a knife, and youth violence. The second part of the workshop is delivered by a youth worker. And helps students to decompress from the first workshop and discuss youth violence and

consequences etc, Throughout the workshops, youth workers promote youth sessions as a form of positive, diversionary activities and a representative from the local Safer Neighbourhoods team attend promoting a collaborative approach to tackling youth violence, perceptions of youth violence, improving relationships with the Police and promoting alternatives to being involved in ASB. The workshop has also been offered to Hartshill School.

**Safer Streets** - The Safer Streets Fund enables PCCs and local authorities to bid for investment in initiatives, such as street lighting and home security, that have been proven to prevent neighbourhood crime. This funding round is now closed.

1. **Round 3** - Warwickshire partners were successful in an application to the Home Office for Safer Streets Round 3 funding for interventions to reduce Violence against Women and Girls (VAWG) and increase feelings of safety in public spaces. Confirmation of the funding was received in early October, with allocated funds to be spent by 31<sup>st</sup> March 2022. £249,000 was allocated to Warwickshire through the Safer Streets fund. North Warwickshire benefitted from a new camera and lamp column purchased for Meadow Street Gardens in Atherstone.
2. **Round 4 & 5** - On the 25 July, the Government announced £50 million funding for 111 projects through Round Four of the Safer Streets Fund. Whilst a significant amount of additional funding was invested through Round Four, there were fewer applications to this round than anticipated. As a result, the Home Office are now able to confirm that having considered options to ensure remaining funds from Round Four are maximised, Ministers have decided the funding will be used to support other priority areas, likely for activity which will benefit crime prevention and policing.
3. Following the recently conducted survey undertaken by TONIC on behalf of Violence Against Women and Girls recommendations include 'Increasing the safety in public spaces: by working to improve feelings of safety in public spaces across Warwickshire for women and girls and 'after dark', consider increased police presence, CCTV, and street lighting.

**Operation Sceptre** commenced 16th May which promotes messages around the implications of carrying a knife which we've seen a slight increase in this activity. The Police and schools have carried out joint searches of pupils, premises and local parks so this is likely to reflect the number of items being found and/or reported.

**Warwickshire Re-offending Board** met in June and circulated a copy of the Warwickshire Reducing Re-offending Strategy 2022-2027. There is a statutory requirement to work collectively to reduce this activity. Key strategic priorities include the prevention agenda, approach to reduce risk of harm and reduce re-offending. Next steps include data analysis, production of a concise high-level

strategy and delivery plan. Working groups are going to be established to deliver this agenda.

**The Safe Accommodation Working Group** last met in July. Additional capacity is being identified to liaise between the MARAC the individual homeless teams. Two additional officers will be recruited one to represent the South and one to represent the North.

North Warwickshire currently has a Domestic Homicide Review.

The **Drugs and Alcohol Strategic Partnership (DASP)** are in the process of appointing a drug related coordinator managed by Public Health plus the development of a drug alert process to inform professionals, clients and families and the public of any drug related incidents with the aim to reduce drug related harms and deaths in Warwickshire. To do this a Professional Information Network (PIN) has been established and envisaged that will cascade the alert locally.

**Serious Acquisitive Crime -With a focus on residential burglary dwelling, vehicle crime and personal robbery**

This quarter has seen an increase in all areas – theft of a vehicle, from a vehicle, residential burglary and personal robbery. All SNT areas have seen increases in the thefts of motor vehicle compared to Q1 last year. Fillongley, Kingsbury and Water Orton Wards have seen increases in all areas of concern here, compared to last year however the Police have been incredibly active looking at data to tackle the issue and as a result have been successful in recovering several vehicles, whilst promoting crime prevention advice.

BMC garage in Water Orton now offers catalytic converter marking following recent incidents. Two garages in Atherstone also have kits that enables local people to access free catalytic converter kit to drive down local targets.

A Community Safety Prevention Event was held at Corley Services that provided information about road safety, preventing car and vehicle theft alongside discussing with Corley services concerns around HGV safety including lighting, CCTV and signage.

**Road Safety**

Consultation is currently taking place between 5 September and 16 October 2022 by National Highways on proposed works to the A5 which were given funding in the March 2020 Budget. These works fall within phases 1 and 2 of the improvements to the A5 sought as part of the Strategic Transport Assessment for the adopted Local Plan. The improvements include Spon Lane, Grendon and Holly Lane, Atherstone roundabouts as well as presenting three possible options for the Dordon off-line dual carriageway.

Operation Array has now closed however following an increase again in the number of reports of off-road bike nuisances at various locations more targeted work will be undertaken to patrol local known hot spots when resources allow.

Community Speed watch have been active conducting speed checks. Mancetter CSW group having been recently trained and went out on Saturday 25th June 2022 for a second time recording 15 vehicles exceeding the limit in a short space of time. Atherstone CSW have been formed with 6 new members who have now been vetted and have a date planned in for their laser training very soon. Two new sites have been risk assessed along with a new fixed distance. On the 2 August Nether Whitacre Community Speed Watch Group were out and about helping to reduce speed in the area. Mancetter have also been out in August. This road safety initiative is managed by volunteers and Coordinated by the Police.

Work continues educating the public about the dangers of parking on zig zag/yellow lines. Foot patrols have been active explaining about the safety of parking responsibly and thinking about other road users. The penalty for parking on zig zag lines is £100 fine and three points.

Parking issues are frequently reported in NW. Offences are dealt with whilst Police are on patrol. Recently local Police issued tickets to cars parked illegally on Sheepy Road and Croft Road Atherstone.

Work continues the Street Cruising Injunction. The Barrister has enlisted some support from another colleague following his time being taken up on the Just Stop Oil court cases.

Warwickshire Road Safety Partnership is inviting the public to a memorial service to 'Remember the lives lost and injured on Warwickshire's roads' at St Mary's Church, Warwick, between 2.30pm and 4.30pm on Sunday 20 November 2022 – the World Day of Remembrance for Road Traffic Victims (#WDoR2022). The service will also be live streamed on Facebook. The church will open from 2.30pm to provide the opportunity for anyone who would like to light a candle and take some time for silent reflection.

### **Anti-Social Behaviour**

The multi-agency anti-social behaviour tasking and case management meetings continue to be held monthly. The latest meeting was held in September. There have seen some new case management plans discussed and several hotspots' areas.

**Operation Hydrax** has involved local Police Officers working in partnership with the Councils and Oil terminal operators to assist with the Just Stop Oil protests. Over 200 arrests were made since June because of unlawful activities. Further activity was observed during August with a greater focus around tunnelling that resulted in a further 30 arrests, followed by 52 on the 14<sup>th</sup> September. This has been a significant operation and is ongoing.

**North Warwickshire Boxing Club** has re-opened post covid and attendees benefit from new equipment and flooring. The Boxing Club supports schools and pupils and aims to help lower the exclusion rates. A mural has been created to mark three years since it began. There is now over 40 members with many

successes including individuals not re-offending since attending. This intervention has quite literally been life changing to many.

**ASB Awareness week** was held 18-22 July 2022. The Countywide approach reached 3.5k people through social media channels. Across Warwickshire Police patrols took place in hot spot areas, 7 engagement events were held that looked at impact and consequences and the promotion of Community Triggers.

Warwickshire Community Safety Partnership held an **ASB Partnership Event** on Wednesday 21st September 2022. The event provided a 2 ½ hour training session followed by workshop discussions in relation to how the tools and powers in Warwickshire can be used.

### **Improving Public Perceptions of Community Safety**

The Safer Neighbourhood Team have been busy over the last quarter addressing local priorities, listening to the community and providing prevention advice examples include:

- Foot patrols in Atherstone engaging with the community and shop owners
- Knit and natter group (3 August) in Coleshill,
- Show and tell event in partnership with Warwickshire Fire and Rescue in Water Orton (3 August),
- Property marking event of tools and equipment (13 August) at Gunhill allotments. A further event is being held in September.
- Crime prevention event in partnership with NW Neighbourhood Watch at Curdworth Village Hall,
- providing advice on equine crime prevention at NW RDA Stables,
- Atherstone SNT attended Market Square, Atherstone and Hartshill Hayes for a crime prevention community event (Aug)
- On 26th August, PCSO Hodson attended Newton Regis Garden Centre for a crime prevention community event and Dobbie's Garden Centre which was well attended
- Coleshill and Atherstone officers have been promoting Warwickshire Connected. This is providing information about what is happening in your local area, keep residents up to date and enables local people to get involved in shaping what goes on where you live or work. This is a free messaging service [www.warwickshireconnected.com](http://www.warwickshireconnected.com).

### **Cross cutting issues – Prevent/Exploitation/Hate Crime**

- **Vulnerability and Exploitation** - The reported offences of exploitation and modern slavery are at very low volumes and there have not been any referrals to Children and Families Front Door (previously MASH) from North Warwickshire Borough this quarter. This may suggest continued lack of identification and awareness in the borough or a genuine low volume of these types of offences.
- **Prevent** – The last Prevent meeting took place 7 July 2022. The national threat has been reduced from severe to substantial in February 2022. No attacks have taken place in the UK in the last six months. Right Wing



extremism remains the highest priority still in Warwickshire with the highest risk being self-initiated terrorist (lone wolfs). No specific recent reports in NW..

The Warwickshire Prevent Steering Group has undertaken a partnership self-assessment exercise to identify the current Warks position and where Warwickshire needs to be. The emerging issues are around HS2 and Kingsbury Oil Terminal (Just Stop Oil) trying to interrupt national supply chains.

- Geoff Thomas, the Prevent Officer, WCC has offered to provide Prevent Duty training.
- **Hate Crime** – As highlighted above the offences have significantly reduced this quarter, compared to the trend for higher volumes during the last year. North Warwickshire district to show reductions compared to the 3-year average. Racist hate crime remains the most prominent in North Warwickshire Borough and indeed the county, although disability related incidents are also of note to the borough

The Warwickshire Hate Crime Group is Chaired by Junaid at Equip. Key activities include:

- Revisiting the reporting of hate crime,
- Revising the terms of reference.
- Supporting the Safer Warwickshire Partnership Board 'Big Conversation' event that will focus on serious violence and tackling all forms of discrimination.
- Coordinating activities for the. National Business Crime Awareness Week 17-24th October 2022. As part of a recent harassment report linked to ASB and staff threatening - which the #Shopkind campaign is directly targeting, several repeat targeted locations have been identified across the county that we could potentially engage with during the week. In North Warwickshire this will include Corley Services.

**ASB** -The multi-agency anti-social behaviour tasking and case management meetings continue to be held monthly. The latest meeting was held on 14 October 2022. The table below indicates the number of ASB powers and interventions that are in place in North Warwickshire and are representative of good partnership arrangements to address criminal activity in a coordinated way.

In summary these are:

	February	May	August
Civil Injunction	4	1	3
Criminal Behaviour Order	1	1	1
Target Gathering	1	1	1
Acceptable Behaviour Contract	6	8	5
Community Protection Warnings	2	10	8
Community Protection Notices	0	0	0
Closure orders	1	1	0
Parental Responsibility Contracts	0	0	0
Locations	1	4	2
Section 59	-	-	3
Community Trigger	0	0	0
Case Management	8	9	6

(\* NB – Civil injunctions excluding oil terminal)

## 7 Community Safety Grant 2022/23

7.1 The Police and Crime Commissioner has confirmed the allocations to the Warwickshire Community Safety Partnerships. Following discussions with representatives of the partnerships across Warwickshire a co-ordinated response to the reductions was agreed. In 2021/2 the allocation for the North Warwickshire Community Safety Partnership was £22,469.00 a reduction of £9,922.00 from the 2020/21 allocation of £32,391.00.

7.2 The CSP made an application for three projects from the Community Safety 2022/3 grant application: The fund's total £23,000 and included

	Amount requested 2022/3	Awarded
Serious Violence Mentoring Project	£3,000.00	£3,000
Local community safety projects/ Emerging trends priorities	£5,000	£5,000
Safer Warwickshire Officer	£15,000.00	-
<b>A=Total Revenue Costs:</b>	<b>£22,469.00</b>	<b>£8,000</b>

### **Serious Violence Mentoring Programme (£3k)**

In brief the programme has two critical elements. Firstly, to identify and train skilled mentors who can work with young people aged 14-25 who are at risk of becoming involved in serious violent lifestyles and secondly the programme will identify and train local people who will become community mentors. Community mentors will be offered training and support and will be involved in voluntary mentoring under the supervision of our training provider and our skilled mentors.

### **Local Community Safety Fund (£5k)**

The local community safety fund is money available that can be used to help deliver against the North Warwickshire Community Safety priorities by supporting initiatives/interventions that reduce crime in line with the partnerships core priorities including (but not exclusive):

- Violent Crime
- Serious Acquisitive Crime
- Rural Crime.
- Road Safety

The funding for the Safer Warwickshire Officer was declined. A further bid was made for the same amount of funding to address another key concern – off road bikes.

A summary is provided below.

#### **Target Hardening – nuisance off road bikes (£15k)**

To address community concerns in relation to off road vehicle nuisance in the North Warwickshire area. It is regularly raised at the multiagency ASB meetings and requires some focussed activity around target hardening measures. The work will use a more investigative and intelligence-driven approach to help identify offending riders, disrupt illegal activity and seize offending vehicles. This will compliment the robust proactive work previously taken as part of operation Array. Techniques used will include the mapping of offending vehicles and riders, to help build a more detailed intelligence picture relating to reported incidents and riders committing offences.

Other aspects of the operation will include proactive early interventions and more specifically target hardening and wider partnership engagement. We will work with landowners to look at how we can work together to make locations more difficult for the riders to access as to reassures the public of the partnerships commitment to tackle this issue, that we are listening to their concerns and taking them seriously. The funding will support the Police in tackling the issue and in turn residents and their safety.

## **8 2023/24 Partnership Funding Requests**

- 8.1 A report is being prepared for the Safer Warwickshire Board in relation to several shared partnership posts. Currently all Districts have a shared responsibility for the costs of several posts including DHRs, MARAC and ECINs. A new request has been made to cover the cost of the Prevent Officer. A report will be prepared for Members in due course as there are several financial implications..

## **9 Summary**

- 9.1 Members are requested to note the report and the progress updates provided by the North Warwickshire Community Safety Partnership and identify any areas for further consideration as highlighted in the report

## **10 Report Implications**

### **10.1 Finance and Value for Money Implications**

- 10.1.1 The reduction of £9,922.00 in the 2021/22 community safety grant for North Warwickshire made it difficult to support individual community safety projects and has resulted in some difficult conversations about future long-term projects and how these will be funded. The allocation of funding in 2022/23 is of great concern alongside other projects receiving less funding in North Warwickshire.

### **10.2 Safer Communities Implications**

- 10.2.1 These are set in the report and the appendices.

### **10.3 Legal, Data Protection and Human Rights Implications**

- 10.3.1 Community Safety Partnerships were introduced by the Crime and Disorder Act 1998 and most recently amended by the Policing and Crime Act 2009. It is a requirement that the Council works with the police, the fire and rescue authority and the county council to implement a strategy for the reduction of crime. The recommendations in this report and the revised partnership plan contribute to the discharge of that requirement.

- 10.3.2 The deployment of CCTV and ANPR cameras are subject to several legal provisions, including the Protection of Freedoms Act, UK General Data Protection Regulation, Human Rights Act, and others. The deployment is also subject to guidance prepared by the Information Commissioner's Office and the Surveillance Camera Commissioner.

- 10.3.3 The Council is required to have a committee that scrutinises the crime and disorder work of various organisations within the Borough. The Council has decided that this Committee will fulfil that requirement.

#### **10.4 Environment, Climate Change and Health Implications**

10.4.1 By working to reduce crime and disorder, the partnership is contributing towards improving the quality of life for residents, businesses, and visitors to North Warwickshire.

#### **10.5 Health Implications**

10.5.1 The work of the partnership has several synergies with contributing towards healthier communities. These include tackling violent crime, supporting victims of domestic abuse, tackling alcohol and drug misuse, and reducing anti-social behaviour.

#### **10.6 Risk Management Implications**

10.6.1 The Community Safety Partnership Strategic Assessment includes risk analysis of risk and harm. The analysis uses an adapted Association of Chief Police Officers' Model (ACPO 3 PLEM). This is a basis scoring matrix for levels of harm. The assessment also includes consideration of a Management of Risk in Law Enforcement (MORILE) matrix. The key risks for the partnership are identified within the strategic assessment prepared each year.

#### **10.7 Equality Implications**

10.7.1 The work of the partnership includes several activities which contribute towards equality objectives. These include support services for victims of domestic abuse, reducing repeat victimisation, monitoring of hate crimes and rehabilitation of offenders.

#### **10.8 Links to Council's Priorities**

10.8.1 The Council has a priority for creating safer communities.

The Contact Officer for this report is Julie Taylor (719437).

**Notes to this report:**

This is the latest in a series of quarterly reports produced for the North Warwickshire Community Safety Partnership, providing an overview of recorded crime and disorder data.

Included in this report is data obtained from partners relating to the North Warwickshire Priorities for 2021-2025, as shown in the graphic on this page.

Comparisons to last year and a 3 year average are included in this report following the colour coding method of:

- Green** = greater than 5% reduction
- Amber** = within +/- 5%
- Red** = greater than 5% increase

It must be noted that the worldwide COVID-19 pandemic and consequent lockdowns occurred throughout 2020/21 and as such any comparisons to this time period must take into account irregular trends during this time.

As of Q2 2021 additional partner data has been included to provide CSPs with a broader overview of trends relating to the priorities. As this is a new process, some data comparisons may not yet be available.

The figures should not be reproduced outside of the Partnership without permission from the owners of the data.

Report produced by: Sarah Parker, CSP Analyst, Warwickshire Business Intelligence, July 2022, [businessintelligence@warwickshire.gov.uk](mailto:businessintelligence@warwickshire.gov.uk)

**Sources:**

- Police Crime and incidents - ATHENA Crime Information System, STORM Incident System, Warwickshire Police, July 2022.
- Schools Exclusions - School Census Collections of all state-funded schools based on school location, Business Intelligence (Education), WCC, July 22 (based on Academic Year 21/22 Autumn and Spring Terms only).
- MASH Referrals now Children and Families Front Door Referrals- - Business Intelligence, WCC. Contacts have been excluded. Each child within each Contact and Referral is counted as one. District is based on the District as recorded within the form. This is based on the date of contact as recorded within the form.
- CE Missing and Trafficking Framework – Business Intelligence (Children and Families), WCC
- Cyber Fraud – Action Fraud
- Youth Justice Cohort information – YJS
- Substance Misuse – CGL Warwickshire and Compass Warwickshire
- Domestic Abuse – Refuge and DACs; MARAC Performance Data
- Rural Crime according the Rural and Wildlife Crime Strategy – Rural Crime Officer, Warwickshire Police
- Reducing Reoffending - <https://www.gov.uk/government/statistics/proven-reoffending-statistics-april-to-june-2020>, based on Jul 19-Jun 20
- KSIs – WCC Road Safety Team
- Streetsafe - <https://knowledgehub.group/group/streetsafe/dashboard>

**North Warwickshire CSP Priorities for 2021-2025**





Performance – North Warwickshire CSP Priority – 1) Violent crime with a focus knife crime, domestic abuse and alcohol related violence

Indicator	2021/22 Total	Q1 2022/23	Q1 2021/22	Q1 vs same period 21/22	Q1 Comparison to 3 year average
<i>Violence with injury</i>	525	<b>142</b>	146	<b>-2.7%</b>	<b>6.5%</b>
<i>Violence with injury - domestic abuse flag</i>	185	<b>53</b>	55	<b>-3.6%</b>	<b>-3.0%</b>
<i>Violence with injury - domestic abuse flag - as a % of total violence with injury</i>	35%	<b>37%</b>	38%	<b>-0.3%</b>	<b>-3.7%</b>
<i>Violence without injury</i>	1,200	<b>276</b>	333	<b>-17.1%</b>	<b>16.6%</b>
<i>Violence without injury - domestic abuse flag</i>	454	<b>111</b>	127	<b>-12.6%</b>	<b>8.5%</b>
<i>Violence without injury - domestic abuse flag - as a % of total violence without injury</i>	38%	<b>40%</b>	38%	<b>2.1%</b>	<b>-3.0%</b>
<i>Violence with and without injury - alcohol related flag</i>	138	<b>35</b>	40	<b>-12.5%</b>	<b>-68.0%</b>
<i>Section 18 Wounding</i>	44	<b>12</b>	15	<b>-20.0%</b>	<b>80.0%</b>
<i>Section 20 Wounding</i>	27	<b>0</b>	11	<b>-100.0%</b>	<b>-100.0%</b>
<i>Knife related violent crime</i>	16	<b>2</b>	4	<b>-50.0%</b>	<b>-20.0%</b>
<i>Possession of Article with Blade or Point</i>	24	<b>10</b>	5	<b>100.0%</b>	<b>N/A</b>
<i>Possession of other Weapons</i>	29	<b>10</b>	6	<b>66.7%</b>	<b>N/A</b>

**Violent Crime – Violence with and without injury** offences are now at volumes below last year but remain higher than the 3 year average. However, it is likely that changes to Home Office recording since 2018 is responsible for the majority of the higher trend in **violence without injury** offences, with current volumes possibly now ‘typical’ for the borough.

**Violence with injury** offences this quarter were slightly more likely to occur in a public place (53% of offences), with only 1 offence involving a knife. Repeat locations were mainly at home addresses but 6 public locations experienced repeat offences during this quarter, including Hartshill School.

**Wounding Offences** – After a much higher trend of **S18 and 20 wounding** offences during 21/22, volumes during quarter 1 this year have reduced, although S18 offences specifically remain higher than the 3 year average. This suggests that this offence type is a risk area for the CSP. None of the woundings this quarter involved a knife and offences continue to occur in both public places and home addresses in equal volumes. No offences were repeats this period, with offences spread out across a number of wards.

**Knife Crime** – Violent offences involving a knife continue to show lower volumes for North Warwickshire Borough. However, offences involving a weapon have almost doubled compared to last year, occurring in both public places and domestic environments. This may indicate a positive trend of improved identification of individuals carrying weapons. School suspensions due to the ‘use or threat of an offensive or prohibited weapon’ in schools in the borough continues to increase and to be a significant area of concern. Up to spring term 20/21 there were 16 suspensions in North Warwickshire Borough as a result of this behaviour, which is the highest in the county. However, volumes of children in the YJS cohort linked to knife and weapon related offences remain level with the previous year. The increased prevalence of knives within schools may be a result of possible improved searching/identification in schools, rather than actual usage of the knife to commit an offence. Schools affected include Hartshill School, Kingsbury School, Outwoods Primary School, Coleshill School and Polesworth School.

**Alcohol related violence** – Volumes of violent offences involving alcohol remain well below last year and the 3 year average.



Performance – North Warwickshire CSP Priority – 2) Serious Acquisitive Crime focusing on residential burglary (dwelling), vehicle crime and personal robbery  
3) Rural crime based on the rural and wildlife crime strategy definition

Indicator	2021/22 Total	Q1 2022/23	Q1 2021/22	Q1 vs same period 21/22	Q1 Comparison to 3 year average
<b>Serious Acquisitive Crime Total</b>	477	<b>195</b>	120	<b>62.5%</b>	<b>18.2%</b>
<i>Theft of Vehicle</i>	148	<b>61</b>	29	<b>110.3%</b>	<b>72.6%</b>
<i>Theft from Vehicle</i>	199	<b>77</b>	45	<b>71.1%</b>	<b>-3.8%</b>
<i>Residential burglary</i>	168	<b>50</b>	39	<b>28.2%</b>	<b>-40.0%</b>
<i>Personal Robbery</i>	22	<b>7</b>	7	<b>0.0%</b>	<b>-12.5%</b>
Rural Crime Offences	195	<b>23</b>	61	<b>-62.3%</b>	<b>-75.9%</b>

**Serious Acquisitive Crime** – As expected, many areas of serious acquisitive crime are beginning to return to volumes seen prior to the pandemic, which is why most areas are showing as increases compared to last year. As identified in the quarter 4 report, **thefts of a vehicle** are an emerging area of concern for the CSP, with volumes much higher than the 3 year average. A breakdown of the most affected wards are shown on page 7 and this highlights that offences have occurred in high volumes in the East, South and West of the borough.

*Analysis of the vehicle thefts this quarter show:*

- *Most likely to occur at a home address (62% of offences).*
- *For offences in a public place, hotel car parks have been specifically targeted.*
- *Most vehicles were secure.*
- *Most common vehicles stolen were motorbikes and vans. Range Rovers were also noted.*
- *A number of offences were domestic related where the suspect and victim knew each other.*

Positively, **personal robbery offences** remain at lower volumes than in previous years, although seasonal trends suggest higher volumes are likely to occur over the next quarter.

**Rural Crime** – Offences recorded as part of the **Rural and Wildlife Crime Strategy** continue to remain much lower than the long term trend. This is of specific note this quarter as seasonal analysis suggests that volumes of this type of offence would normally peak in the borough during quarter 1.

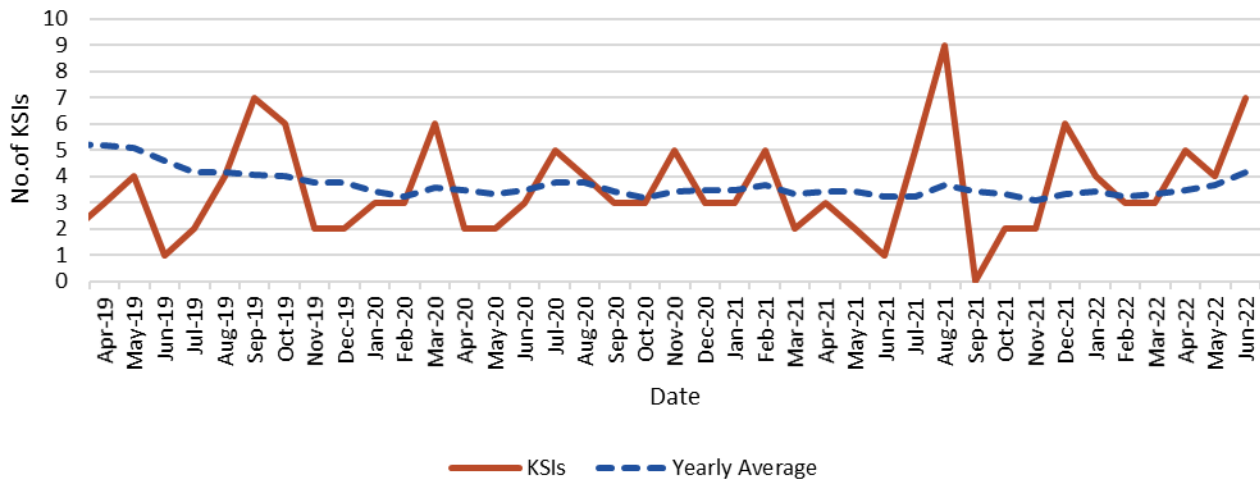




Performance – South Warwickshire CSP Priority – 4) Road Safety with a focus on road traffic accidents resulting in Killed or Seriously Injured (KSI)

Indicator	2021/22 Total	Q1 2022/23	Q1 2021/22	Q1 vs same period 21/22	Q1 Comparison to 3 year average
People killed or seriously injured in road traffic collisions	35	<b>16</b>	6	<b>166.7%</b>	<b>54.8%</b>
<i>Fatal</i>	2	<b>3</b>	0	<b>300.0%</b>	<b>350.0%</b>
<i>Serious</i>	33	<b>13</b>	6	<b>116.7%</b>	<b>34.5%</b>

**KSIs in North Warwickshire Borough since, April 2019**

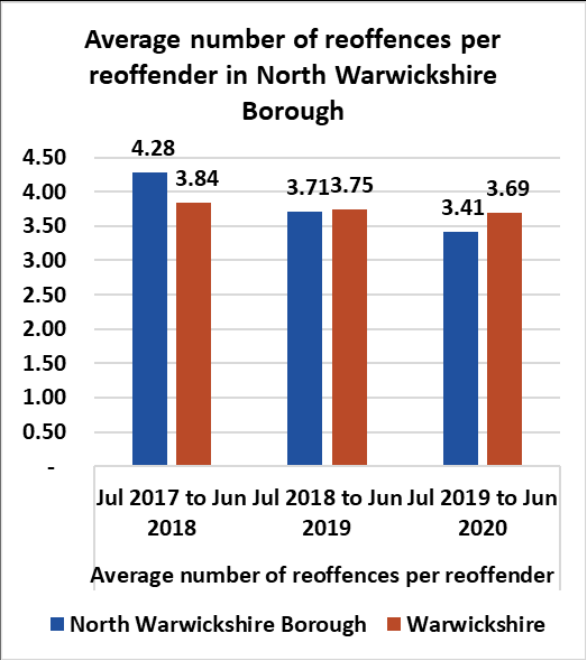
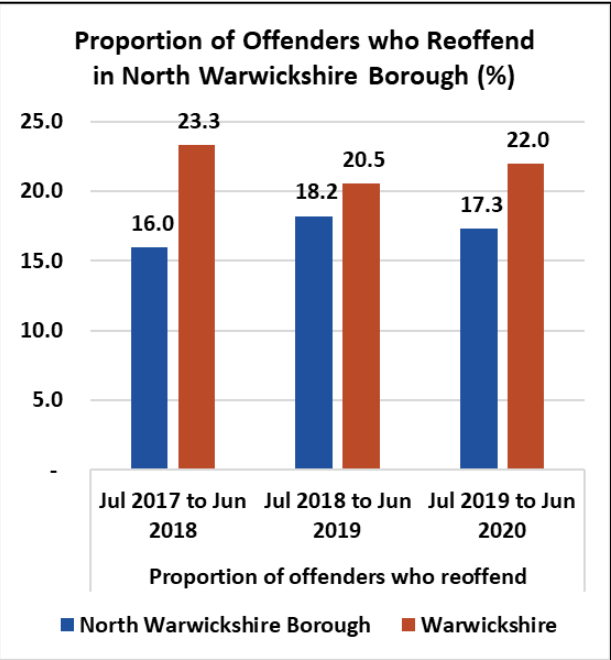


**KSI** – Volumes of KSIs in the borough have increased significantly compared to last year and the 3 year average. However, it is likely that the higher volumes are in line with seasonal trends usually seen in quarter 2, with several other boroughs/districts also seeing high volumes this quarter.

There have been 3 fatal incidents in North Warwickshire Borough this quarter which is higher than the total number of fatal incidents in the borough for all of last year. This therefore identifies road safety as an area of concern for the CSP.



**Performance – North Warwickshire CSP Cross-Cutting Theme – Reducing Reoffending Public Perception of Crime**

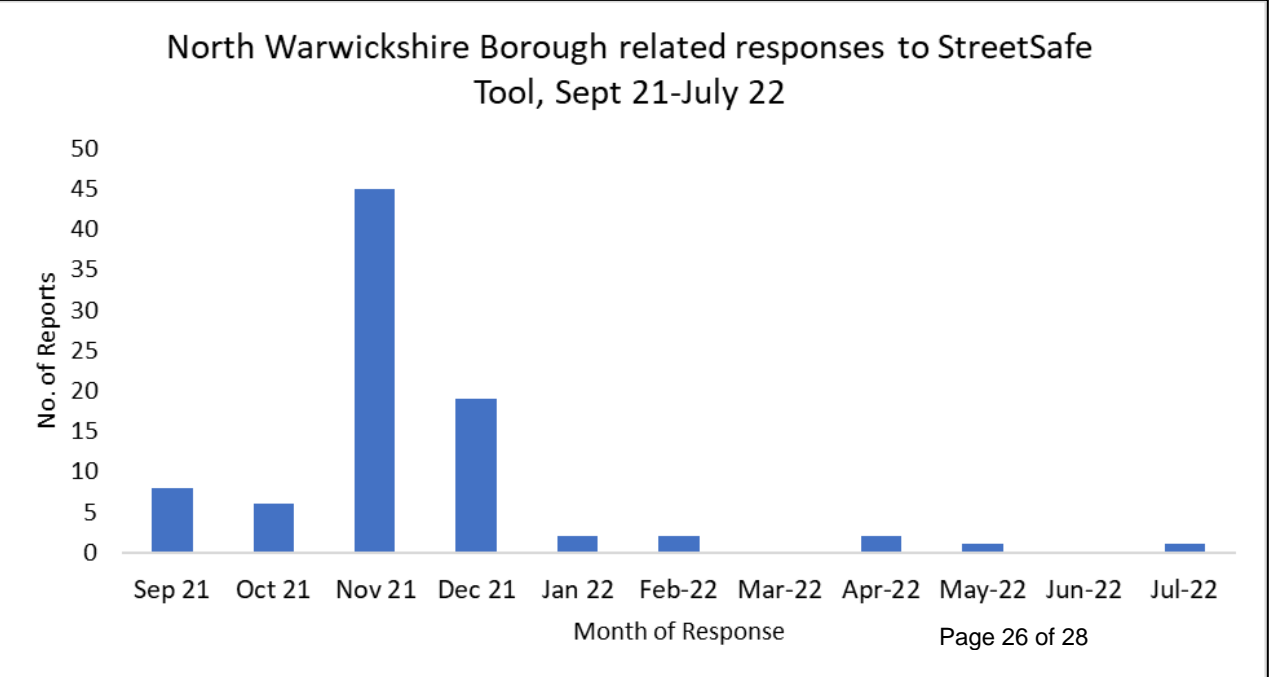


**Reoffending rates** in the borough continue to be below the county average. The overall trend shows that those who do reoffend in the borough are less likely to commit more reoffences than the county average, with the average number of reoffences per reoffender continuing to reduce in the borough in line with county trends.

**Perception of Crime** – available data from the StreetSafe\* tool indicates that 20% of the 404 responses in Warwickshire between 2<sup>nd</sup> September and 14<sup>th</sup> July 2022 related to areas in North Warwickshire Borough (84 responses). There have only been 2 responses relating to North Warwickshire Borough in quarter 1, and for that reason there has been no change to the key findings highlighted in previous reports:

- The majority of reports came from the northern part of the borough.
- Badly lit areas were the most prominent environmental concern.
- Where stated, ‘verbal harassment from groups of strangers’ and/or ‘feeling like you are being followed’ were the main behavioural concerns.
- Evenings and overnight (from 4pm onwards) were the most likely time for incidents to occur.

Analysis as part of the Safer Streets project has also identified 3 hotspots for responses – Newton, Regis and Warton Ward, Polesworth/Dordon and Coleshill.

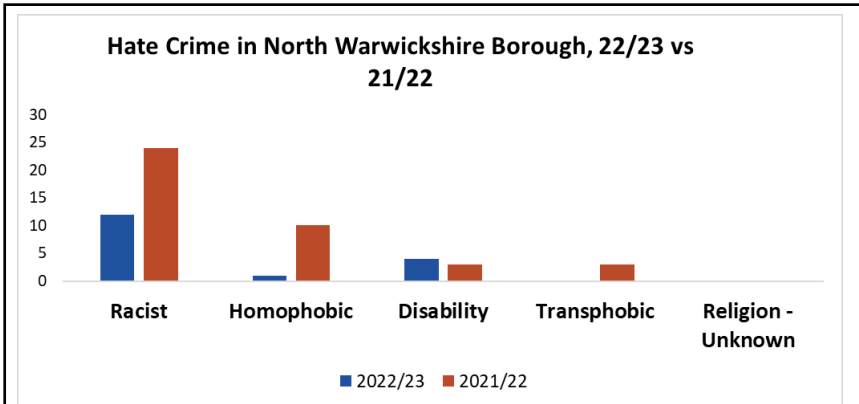


\*StreetSafe is a non-crime anonymous online reporting tool for members of the public to report where women feel unsafe and why. The tool launched on 2nd September 2021.



Performance – North Warwickshire CSP Cross-Cutting Theme – Vulnerability

Indicator	2021/22 Total	Q1 2022/23	Q1 2021/22	Q1 vs same period 21/22	Q1 Comparison to 3 year average
<i>Hate Offences and Non Crimed Investigations</i>	114	<b>17</b>	42	<b>-59.5%</b>	<b>-5.6%</b>
<i>Domestic Abuse Offences and Non Crimed Investigations</i>	1,244	<b>312</b>	328	<b>-4.9%</b>	<b>10.0%</b>
<i>CSE Offences</i>	14	<b>0</b>	1	<b>-100.0%</b>	<b>-100.0%</b>
<i>MSHT offences and crimed incidents</i>	2	<b>1</b>	1	<b>0.0%</b>	<b>N/A</b>

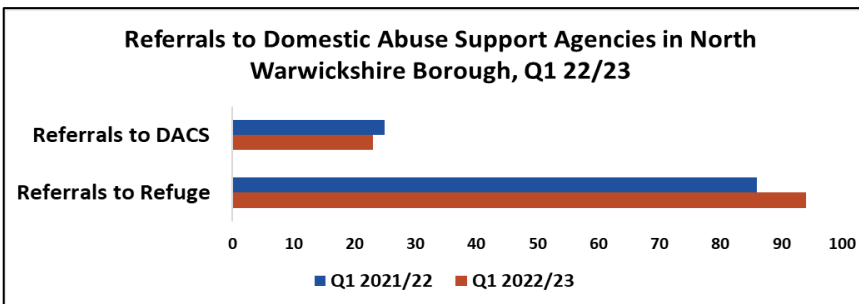


**Hate crime** – Offences have reduced significantly this quarter, compared to the trend for higher volumes during the last year. North Warwickshire Borough is also the only borough to show reductions compared to the 3 year average. **Racist** hate crime remains the most prominent in North Warwickshire Borough and indeed the county, although **disability** related incidents are also of note to the borough.

**Exploitation** – Reported offences of exploitation and modern slavery are at very low volumes and there have not been any referrals to Children and Families Front Door (previously MASH) from North Warwickshire Borough this quarter. This may suggest continued lack of identification and awareness in the borough or a genuine low volume of these types of offences.

**Schools Exclusions** - Persistent absence from school continues to be an issue for the borough, with the highest rates in the county for both secondary schools and primary schools. Suspension rates for secondary school pupils in the borough are also above the county average, identifying school children as an area of specific concern within vulnerability in the borough.

**Domestic Abuse** – Volumes of domestic abuse offences in North Warwickshire Borough are lower than last year but remain higher than the 3 year average. However, as highlighted on page 1, a large proportion of this increase is due to Home Office recording changes since 2018. It is inferred that volumes across the county are likely to now be at ‘typical’ levels. Referrals to support agencies remain high in the borough, despite the reduction in reported offences compared to last year. This suggests that domestic abuse remains a concern for the CSP.





**Performance – North Warwickshire Year to Date Ward Breakdown – Areas of Concern**

SNT Area and Ward	Violence With Injury (Year to Date)		Domestic Abuse (Year to Date)		Thefts of Motor Vehicle (Year to Date)	
	21/22	22/23	21/22	22/23	21/22	22/23
<b>North:</b>	<b>39</b>	<b>42</b>	<b>63</b>	<b>59</b>	<b>4</b>	<b>6</b>
Baddesley and Grendon	9	12	17	13	0	4
Dordon	11	12	14	13	2	2
Newton Regis and Warton	4	6	9	12	1	0
Polesworth East	11	10	19	18	1	0
Polesworth West	4	2	4	3	0	0
<b>East:</b>	<b>53</b>	<b>42</b>	<b>67</b>	<b>69</b>	<b>6</b>	<b>20</b>
Atherstone Central	25	10	27	20	1	5
Atherstone North	10	11	17	12	2	7
Atherstone South and Mancetter	8	13	15	22	1	3
Hartshill	10	8	8	15	2	5
<b>South</b>	<b>30</b>	<b>32</b>	<b>49</b>	<b>35</b>	<b>12</b>	<b>17</b>
Arley and Whitacre	12	11	23	10	3	2
Coleshill North	3	5	7	4	3	3
Coleshill South	8	6	12	11	2	6
Fillongley	7	10	7	10	4	6
<b>West</b>	<b>24</b>	<b>25</b>	<b>43</b>	<b>39</b>	<b>7</b>	<b>17</b>
Curdworth	11	4	7	2	3	7
Hurley and Wood End	7	10	17	13	2	2
Kingsbury	3	6	8	12	0	5
Water Orton	3	5	11	12	2	3

**Positive areas:**

- Most SNT areas have seen reductions in domestic abuse offences compared to the same period last year.
- The **East SNT area** has seen reductions in violence with injury offences compared to Q1 last year.

**Areas of concern:**

- **All SNT areas** have seen increases in thefts of motor vehicle compared to Q1 last year.
- **Fillongley, Kingsbury and Water Orton Wards** have seen increases in all areas of concern here, compared to last year.

*Note – mapping to Ward level often results in a small amount of data loss (missing/incomplete coordinates), therefore the ward totals combined may not add up exactly to the District total.*